

NOT SIFTED

①

ST 201 PZ (test for placement of back dirt pile)

14 June 76

CERAMICS

- / Rhenish blue/gray stoneware - 2
- / White salt glaze stoneware, slipped - 1
- / Burslem brown stoneware - 1

English clay pipe stem stem/bowl

5/16"	Ø	1	1
5/16"	2	Ø	2
7/16"	1	Ø	1

GLASS

- / Wine bottle frags. - 17
- / Pane frags. - 2
- / Mod. clear bottle - 1

NAILS

- / Wrought - 3

METAL

- / Brass, shot gun shell end - 1

MISC

- / Quartz, worked - 1

NOT SIFTED

ST 202 PZ (test for placement of back dirt)

14 June 76 ⁽ⁱ⁾

CERAMICS

- ✓ White salt glaze stoneware, slipped - 1
- ✓ Mottled brown stoneware - 1

- ✓ English clay pipe stems $5/64"$ - 2 ✓
 $6/64"$ - 6 ✓
 $7/64"$ - 1 ✓
- stem frag. - 1 ✓
- bowl frags - 4 ✓ (1 w/ rouletting)

GLASS

- ✓ Wine bottle base late 17th c - 1
- ✓ " " frags. - 16
- ✓ " " rim 1@1700 - 1
- ✓ Pane glass - 2

NAILS

- ✓ Wrought - 3

MISC

- ✓ flint (gray w) chalk exterior) - 1

ST 203 PZ (test of back dirt placement)

14 June 76

CERAMICS

- ✓ White salt glaze stoneware, slipped - 1
- ✓ Mottled brown stoneware - 1
- ✓ Buckley coarse earthenware - 1
- MORGAN JONES? Coarse earthenware, soft orange body, brown/tan glaze - 1

English clay pipe stems	stems/Bowls	
5/64" 2	Ø	2
6/64" 1	1	2
7/64" 2	1	3
8/64" 1	Ø	1
	stem frag. - 1	
	bowl frag. - 1	

GLASS

- ✓ Wine bottle rim frag. - 1
- ✓ " " frags. - 13
- ✓ Mod. clear bottle - 6
- ✓ Poss. wine glass frag. - 1

NAILS

- ✓ Wrought - 5

BONE

- ✓ fragments - 1

MISC

- ✓ crypto crystalline, opaque gray - 1
- ✓ quartz flake? - 1



ST 204 PZ (cont)

GLASS cont

- Pane frags. - 8
- Pharmaceutical - 2
- Modern clear bottle - 1

NAILS

- Wire - 1
- Wrought - 84 (1 w/ Burglem? rusted on)

METAL

- IRON, spike rosehead - 1
- " , unidentified frag. - 1
- BRASS, furniture ornament - 1
- " , candle stick frag? - 1
- LEAD, 2 section bale seal w/ W - 1
- " , frag. unidentified - 1



BONE

- fragments - 33
- teeth - 2

MISC

- Shot mold frags. - 2
- Quartz worked? - 1
- Crypto crystalline gray opaque - 3
- Charcoal - 1 frag
- Brick 2 1/4" x 4"
- Oyster shell - 3
- Mortar 'plaster' samples

Shot mold X mend 205 PZ ; 207 PZ

ST 204 B (previously excavated Hudson root cellar)

30 June 76

CERAMICS

- Rhenish blue/gray stoneware - 2
- " w/ manganese purple - 1 (rim)
- Delftware, blue-white - 1

English clay pipe stems	stem w/ bowl	total
5/64" 7	1	8
6/64" 3	0	3
7/64" 0	1	1
8/64" 2	1	3
bowl frag. - 1		

GLASS

- Wine bottle frag. - 5
- Case bottle frags. - 2
- Pane glass - 1

NAILS

Wrought - 54

METAL

- lead - came - 1
- IRON - Spring - 1

MISC

- Crypto crystalline gray opaque/trans - 3
- "honey" opaque - 1
- oyster shell
- (burnt) wood
- mortar
- plaster
- brick

BONE

- frags. - 13
- tecta - 1

ST204B (Previously ^{Hudson} excavated root cellar)

28 September 76

CERAMICS

English clay pipe bowl frag - 1 ✓

MISC

Charcoal
mortar? ^{shell} daub w/ plaster

ST204C (Cross Passage Mold)

30 October 77

RWK

Ceramics

English Pipe Stem - $\frac{1}{4}$ - 1

Nails

wrought - 2

Bone

fragment - 1

10

ST204D (Cross Passage Mold-East)

3 November 77

RWK

Bone
fragments ✓

ST204F (Repair Mold)

3 November 77

RWK

Ceramics

Eng. Pipe stem w/heel - $\frac{3}{16}$ - 1

Nails

wrought - 1

Misc

brick frag./burnt clay



ST 204 G (Repair hole) manner house

30 October 77

Rwk

CERAMICS

ORGANISMS

Coarse earthenware, orange body w/ red ochre, very small - no glaze - 1 ✓

English clay pipe stem $\frac{8}{64}$ " - 1
bowl fragments - 2

Local clay pipe bowl fragment - 1 ✓

AILS

Wrought - 10

METAL

Lead, shot - 1

BONE

2 small fragments ✓

MISC

flint - 1 ✓

ST204L (Original Hole ~~204L~~) Marker house 9 November 77 RWK

Nail
wrought-1

2.4.12223

1. + 2.4.12223/2.4.12223

2.4.12223/2.4.12223

2.4.12223/2.4.12223

2.4.12223
2.4.12223

2.4.12223
2.4.12223

2.4.12223
2.4.12223

ST204N (manner house roof cellar - builder's trench)

15
7 December 77 crew

Ceramics

Delft - blue & white, plate rim - 1 ✓ (X mend stylistically to 2nd Quarter cellar)

English clay pipe bowl frag. - 1 ✓

Glass

drinking vessel, baluster frag. - 1 ✓

Nails

wrought - 2 ✓

Bone

fishbone, fragments ✓

Misc

charcoal

whitewashed plaster/mortar - 1 1/2 pts. ✓

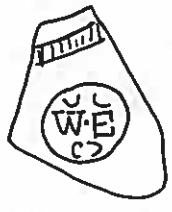
10x10
sifted

JT 205 PE

15-16 June 76

CERAMICS

- Rhenish blue/gray stoneware - 4
- White Salt glaze stoneware dipped handle frag. - 1
- " " Slipped frags. - 7 (1 a base) } 6
- Mottled brown stoneware - 4
- " " thin w/ white interiors - 7 (1 a rim) } 6
- Burslem brown stoneware, incised - 1
- Nottingham brown stoneware - 1
- Delftware, blue + white - 2 (same vessel) ✓
- " light blue + purple (same vessel) - 2 ✓
- " plain white frags. - 4 (1 a rim) } 3
- " blue + white - 1 (rim) ✓
- Slipware, yellow - 3
- " yellow combed/trailed - 2 ✓
- " dark slip handle - 1 ✓
- North Devon sgraffito slipware - 3
- North Devon gravel temper ware - 5 ✓
- Buckley coarse earthenware - 1 ✓
- MORGAN JONES { Coarse earthenware orange body w/ red ochre no glaze - 2.
- " " " " gr. glaze - 1 ✓



English clay pipe stems	stems w/ bowls	total
5/64" 32	3	35
6/64" 15	1	16
7/64" 5	2	7
8/64" 4	2 (one almost complete)	6
stem frags. - 11		
bowl frags. - 26		
" " w/ makers mark - WE		
" " w/ makers mark illegible		

local pipe stem 7/64" - 1

ST 205 PZ (cont)

GLASS

- Wine bottle rim frag. - 1
- Wine bottle frags. base - 3
- Wine bottle frags. - 80
- Pane glass - 7
- Drinking glass frags. - 8
- Clear - vessel unknown - 2
- Modern clear - 1
- Case bottle frags. - 3

NAILS

- Wrought - 56
- Wire - 1

BONE

- fragments - 37
- teeth - 4

METAL

- LEAD - bale seal - 1 section crown + harp - 1
- " - came - 1
- foil - 1

MISC

- Shot mold frags - 2
- Brick
- mortar + plaster
- Oyster shell - 1 cup
- Crypto crystalline opaque - 2
- " tras. - 3
- " opaque white - 1
- Quartz - 1

Disturbed

ST 205 N - E (Paul Hudson disturbance)

21 July 76

CERAMICS

Rhenish stoneware w/ manganese purple - 1

Rhenish blue/gray stoneware, base - 1

Delftware, blue & white - 2 (1 a rim)

" , polychrome, blue/red/green - 1

" , plain white - 1

Slipware, yellow dotted - 2

N. Devon sgraffito slipware - 4

MORGAN JONES Coarse earthenware, orange body w/ red ochre, orange glaze - 1
- tan rim

English clay pipe stems

stems w/ bowls

5/64" 15

5

6/64" 6

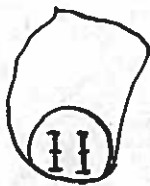
2 (1 w/ heel)

7/64" 1

1 (1 w/ heel)

8/64" 0

1



stem frags. - 1

bowl frags. - 11

" w/ illegible cartouche - 1

w/ cartouche (II) - 1

GLASS

Wine bottle frags. - 7

Case bottle frags - 1

Drinking glass frags. - 2

NAILS

Wrought - 22

METAL

IRON - ring

" frags unidentified - 1

LEAD - turned lead - 1

MISC

flint 'chert gray - 1

BONE

frags. - 51

tools - 6

Disturbed

ST 205 F (Paul Hudson disturbance)

28 September 76

CERAMICS

Coarseware, orange to buff body w/ red ochre, greenish glaze - 1

White salt glaze stoneware

English clay pipe stems 6/64" - 2

GLASS

Wine bottle frag. - 1

NAILS

Wrought - 4

Wire - 1 (Paul Hudson)

MISC

brick .35" x .2"

mortar (shell) .35

Disturbed

ST 205 F (Back fill to Hudson cuts through subsoil)

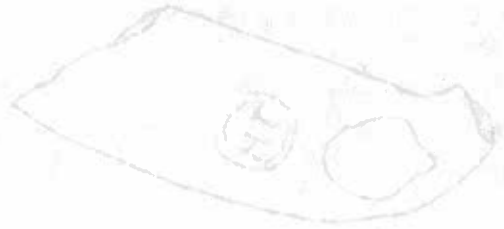
20
6/28/76

CERAMICS

English clay pipe stem $5/64 - 3$ $\left\{ \begin{array}{l} 2 \\ 1 \end{array} \right.$ (1 stem w/ bowl)

MISC

burnt wood



32A-2

See additional

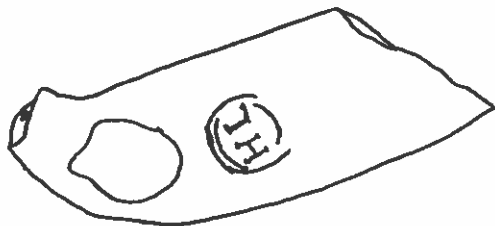
21

ST 205 G (Really) (small pit)

26 July 76 FN

CERAMICS

English clay pipe bowl $5/64''$ w/ mark - 1



GLASS

Wine bottle neck/rim © 1690-1700

see also 205, N, P

Additional

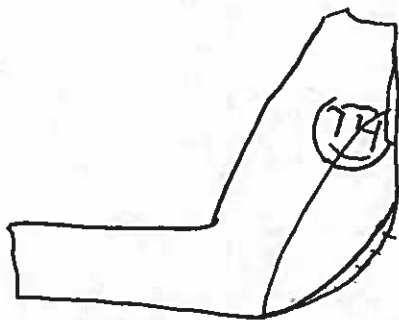
ST 205 6 (small pit)

29 September: 7 October 76 AV

CERAMICS

Delftware, plain white ointment pot (1690-1780) - 1 ✓
North Devon slipware - 2

English clay pipe stem w/ bowl 5/64" w/ mark TH - 1



GLASS

Wine bottle bases - 2 @ 1700 ✓

" " base frag. - 1 ✓

" " neck/rim - 1 ✓

" " frag. - 1 ✓

Wine glass stem/bowl w/ complete folded foot - 1 ✓
@ 1690-1700

NAIL

Wrought - 11 ✓

BONE

fragments - 8 ✓

teeth - 1 ✓

jaw w/ teeth - 1 ✓

MISC

Oyster shell - 1 ✓

Disturbed

ST 205 H

Hudson Backfill
(Reallipit)

28 September 76

23

CERAMICS

English clay pipe stem $5/64"$ - 1

NAILS

Wrought - 2

Disturbed

ST 205 J (Hudson disturbance)

29 September 76 AM

CERAMICS

English clay pipe stems $\frac{1}{4}$ " - 2
" " bowl frags - 3

GLASS

Case bottle frags. - 1

NAIL

Wrought - 1

ST 205 K = same as 208 G
(Post hole)

28 September 76

CERAMICS

N. Devon gravel temper ware - 1

GLASS

Wine bottle frag. - 1

BONE

fragments - 13

jaw - 1

teeth - 3

MISC

black glass bead - 1

Disturbed

ST 245 L (Displaced fill - Hudson)

26
29 September 76

GLASS

Case bottle frags - 2 ✓

NAILS

Wrought - 2 ✓

MISS

Oyster shell - 1 ✓

ST 205 M (lowest layer of small pit)

27
29 September 196

CERAMICS

N. Devon slipware - 2 ✓

MORRIS JONES Coarse ware, orange body w/ red ochre, no glaze - 1 ✓

GLASS

Wine bottle frag - 1 ✓

NAILS

Wrought - 1 ✓

MISC

Oyster shell - 1 ✓

ST 205 N (lense) ²⁰⁵ same as G

29 September 76

CERAMICS

Pipe bowl frag. - 1

trash layer on top post hole ST205R/S

30

ST205Q (Intrusion into Post Hole)

28 October 77

MG

Ceramics

N. Devon sgraffito - 1 ✓

English clay pipe stem frag. - ~~1/4~~ - 1 ✓
bowl frag. - 1 ✓

Bone

fragments ✓

Misc.

charcoal ✓

brick/burned clay ✓

shell (2 frags.) ✓

burned bog iron ✓

Metal

Brass/copper alloy leather ornament - 1 ✓

ST205R (mold) addition NW manner 28, 31 October 77 MG, AMH
house

Bone

fragments /

Misc.

flint - 1 /

bog iron (burned?) /

ST205S (Post Hole)

28, 31 October 77

MG, AMH

Misc.

brick/burnt clay

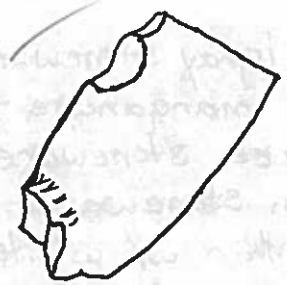
quartz pebble - 1

ST205T (Root mold)

10 November 77 Rook

Ceramics

English clay pipe bowl frag. - 1



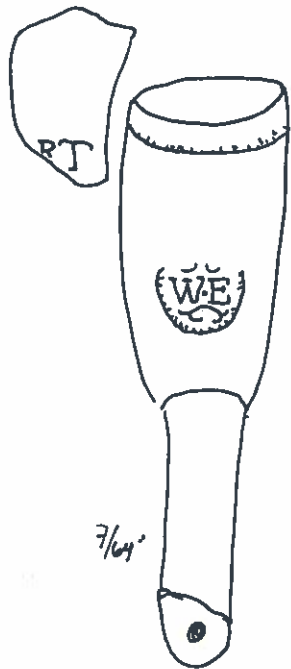
ST 206 PZ

15-16 June '76

CERAMICS

- Rhenish blue/gray stoneware - 10 (1 a handle jt.)
- " w/ manganese purple - 1
- White salt glaze stoneware - slipped - 5
- Mottled brown stoneware - 4
- " " thin w/ white interior - 4
- Burslem brown stoneware - 2 (1 a handle)
- Nottingham brown stoneware - 4
- Delftware, blue + white - 3
- " " plain white drug jar - 1
- " " frags - 2 (1 a rim)
- " " unglazed - 5
- Slipware, yellow trailed - 4
- " " yellow dotted - 1
- " " dark slip - 1
- North Devon sgraffito slipware - 2
- Buckley coarse earthenware - 2
- Coarse earthenware, buff ^{white} body, red ochre, greenish glaze - 4 (2 rim)
- Coarse earthenware, orange body, red ochre, orange/brown glaze - 1

MORGAN JONES
MORGAN JONES



English clay pipe stems	stem/bowls	
7/64"	1	0
5/64"	57	6
6/64"	29	3
7/64"	11	2 (1 bowl w/ mark WE)
8/64"	8	0
stem frags. - 6		
bowl frags. - 38		
bowl frag. w/ makers mark - RT		
" " " partial		
" " w/ heel - 1		
unmeasurable stem - 1		

- Local pipe stem - 6
- stem frag. - 1
- bowl frag. - 1



ST 206 PE (cont)

GLASS

- Wine bottle frags. 47
- Case bottle frag. - 1
- Drinking glass frags. - 2
- " " knob - 1
- Pane glass - 7
- Pharmaceutical - 2
- Modern clear bottle - 5

NAILS

- Wrought - 39
- Cut? Small 3/4" - 1

METAL

- IRON unidentified frags. - 3 ; hinge - 1
- Pewter - unidentified

MISC

- black glass bead - 1/2
- quartzite - 2
- quartz flake - 1
- quartz point - 1
- Oyster shell - 4 frags.
- mortar + plaster samples
- bricks black glazed



ST 206 C (Undisturbed stratum)

14 July 76

CERAMICS

Rhenish blue/gray stoneware - 3
 White salt glaze stoneware, dipped rims - 2
 Burslem brown stoneware - 1
 Delftware, plain/white - 3
 Slipware, yellow - 2
 " , yellow trailed - 1
 " , dark slip - 1
 Buckley coarse earthenware - 1

English clay pipe stems	stems w/bowls
5/64" 22	1
6/64" 9	1
7/64" 0	0
8/64" 1	0
pipe stem frags. - 2	
pipe bowl frags. - 15	

GLASS

Wine bottle frags - 20
 Pane glass - 14
 Drinking glass, folded foot - 5
 " , frags. - 5
 Pharmaceutical - 1

NAILS

Wrought - 47

METAL

IRON, spike? - 1

MISC

Oyster shell - 3

BONE

fragments - 6

ST 206 Y (falasade stain)

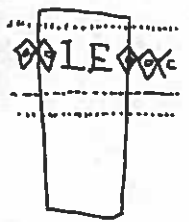
29 October 77 (FN,PT); 4 November 77 (PCM)

CERAMICS

Delftware, pale blue/white mug rims - 2 ✓
" " " " body fragments - 2 ✓

DEGAN JONES

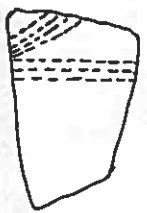
Coarse earthenware, orange body w/ red ochre, no glaze - 2 ✓



English clay pipe stems
1/4" - 1 ✓
7/4" - 4 (one LE) ✓
8/4" - 1 ✓

stem fragments - 3 ✓
bowl fragments - 2 ✓

Local pipe stems - 2 (1 10/4") ✓
" bowl fragment - 1 ✓



NAILS

Wrought - 10 ✓

BONE

fragments (one horse?) ✓
fowl ✓

METAL

Lead shot ✓

MISC

brick bit (?) burnt clay (?) ✓
flint - 3 ✓
charcoal ✓



ST 207 PZ

18:21 June 1976

CERAMICS

- Rhenish blue/gray stoneware - 2
- " w/ manganese purple - 1
- White salt glaze stoneware, slipped - 5 (1 a base)
- Mottled brown stoneware, thin w/ white interior - 2
- " " " handle - 1
- Nottingham brown stoneware - 2 (1 incised)
- Delftware, blue & white - 2
- " " blue ground - 1
- " " plain/white - 3
- " " unglazed - 1
- Slipware, yellow combed - 2
- " " dark slip - 1
- North Devon sgraffito slipware - 4
- Buckley coarse earthenware - 3
- (MORGAN JONES) Coarse earthenware, orange body w/ red ochre, no glaze - 3
- " " " " " orange glaze - 1
- " " " " " green glaze - 1
- " " buff body tan glaze - 1
- Coarse earthenware, orange body / gray core sandy temper no glaze - 1



English clay pipe stems	stems/w bowls	
4/64"	1	0
5/64"	46	4
6/64"	17	3
7/64"	8	0
8/64"	8	1 (w/ heel)

- stem frags. - 10
- bowl frags. - 30
- bowl frags. w/ makers mark 1C - 1
- " " " " 1 - 1
- partial cartouche - 2

GLASS

- Wine bottle frags. - 37
- Drinking glass frags. - ~~7~~ 7
- Pane - 8
- Pharmaceutical Mod. clear - 1
- Thin amber? - 3

MEC

ST 207PZ (cont)

NAILS

Wrought - 58 ✓

METAL

LEAD : Shot - 1 ✓

BONE

fragments - 13 ✓

teeth - 2 ✓

MISC

shot mold frags. - 2 ✓

oyster shell - 1 cup ✓

mortar plaster sample ✓

rubber gasket? frag - 1 ✓

shot mold x mend 205PZ + 204PZ ✓

IN REMARKS FOR

ST 207PZ cont

X mends

Shot mold X ST 204PZ; ST 205PZ

A-1

Disturbed

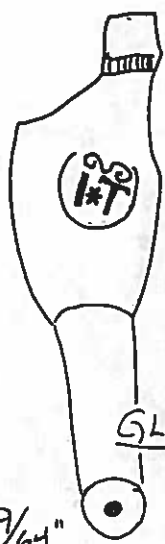
ST 207A (Hudson associated fill)

30 June / 3 July 76

CERAMICS

- Rhenish blue gray stoneware - 1
- White salt glaze - 1
- Delftware, blue + white - 2
- polychrome blue - light purple - 1
- North Devon sgraffito - 2
- Buckley - 1

MORGAN JONES Coarse earthenware, buff body w/ greenish tan glaze - 1



English clay pipe stems stems w/ bowls

4/64"	1	0	1
5/64"	9	2	11
6/64"	0	1	1
7/64"	6	2	1 w/ makers mark see sketch
8/64"	1	0	1
stem frags.	- 3		
bowl frags.	- 7		

GLASS

- Wine bottle base frag. @ 1400 - 1
- frags. 22
- Pane glass - 7
- Drinking glass frags. - 2
- Pharmaceutical? - 1

NAILS

Wrought - 18

BONE

frags. - 12

MISC

- mortar
- plaster
- sea shell? - 1
- quartz / quartzite flakes - 4

ST 207A (Trammel's)

28 September ; 2 November '76

CERAMICS

English clay pipe stem 5/64" - 1
bowl frags. - 3

Local pipe stem frag. - 1

GLASS

Drinking glass stem/foot - 1

Pane - 1

Case bottle frag.? - 1

NAILS

Wrought - 9

BONE

fragments - 3

teeth - 1

MISC

claub

mortar

brick

(1.6")

Disturbed

ST 207 C (Hudson test trench)

28 July AHG

CERAMICS

English clay pipe stems stems w/bowls

5/64" 2

6/64" 1

1
Ø

Delftware, blue & white - 1

GLASS

Wine bottle frag. - 1

Drinking glass frag. - 1

NAILS

Wrought - 1

BONE

fragments - 1

ST207D (2nd Repair Mold) manner house

4 November 77 RWK

Ceramics

N. Devon gravel temper - 1

English clay pipe stem - 5/64 - 1
" " " bowl frags. - 2

Bone

fragment - 1

Misc.

Brick - 1 1/2 cups

Shell - 1 frag.

J. King
M. L. De Saffran
M. Kavanaugh
E. Chaney
B. Mor

0011997

ST 207E (2nd Repair hole) end of house

4 November 77 RW

CERAMICS

Delftware, polychrome green + blue bowl/chamber pot? base - 1 ✓

Slipware, yellow eup base - 1 ✓

North Devon gravel temper ware - 3 ✓

English clay pipe stems stems w/ bowls ✓

5/6" 3

Ø

6/6" 3

1

bowl fragments - 3 (mend) ✓

" " w/ illegible cartouche - 2 ✓

GLASS

Wine bottle fragment - 1 ✓

Drinking glass, Silesian stem frag - 6 sided - 1 ✓

" " , folded foot - 1 ✓

" " , fragments - 2 ✓

NAILS

Wrought - 2 ✓

METAL

Lead, shot - 1 ✓

MISC

Brick

Oyster shell - 3 shells ✓

Pet. bone - 1 ? ✓

BONE

mandible, long bones, toes ✓

ST207F (1st Repair mold) to end of manner house

3 November 77

RWK

Ceramics

- Rhenish blue-grey stoneware, body frag - 1
- Staffordshire brown stoneware, body frag. - 1
- delft - pinkish-brown body, white glaze (flat form?) - base frag - 1 ; body frag - 1
- white w/blue tint - saucer - base frag - 1
- coarse earthenware - buff to orange body, greenish yellow glaze - body frag - 1
- N. Devon gravel temper w/brown/orange glaze - 1

M. J.

- English clay pipe stem - $\frac{5}{64}$ - 2
- " " $\frac{6}{64}$ - 2
- " " frag. - 1
- " bowl " - 2

Glass

- Wine bottle body frag. - 1
- Window pane frag. - 1

Metal

- Copper wire - 1
- pin - 1

Nails

- wrought - 6

Bone

- fragments, some burned

Misc.

- charcoal
- oyster shell - 1 frag
- brick - $\frac{1}{4}$ cup

10ND
Sifted

ST 209 PZ

21-22 June 76

CERAMICS

- Rhenish blue/gray stoneware - 3
- " w/ manganese-purple - 2
- White salt glaze stoneware, dipped rim - 1
- " , slipped - 4
- Mottled brown stoneware - 3
- " " thin w/ white interior - 3
- Burslem brown stoneware - 2 (1 incised)
- Delftware, blue + white, plate rim - 1
- " " " , drug jar rim - 2
- " " " " frag - 1
- " " " , drug jar, light blue - 2
- " plain white - 5
- " unglazed - 2
- Slipware, yellow combed - 2
- " , dark slip - 3
- North Devon sgraffito - 4
- North Devon gravel temper ware - 2 (1 a pan rim)

bluetwhite - 2

English clay pipe stems	stems w/ bowls	
1/64" 2	Ø	2
5/64" 28	Ø 1	29
6/64" 16	3	19
7/64" 4	Ø	4
8/64" 2	Ø	2
stem frags. - 7		
bowl frags. - 18		
w/ rouletting - 1		
w/ partial illegible cartouche - 1		

GLASS

- Wine bottle base frag. - 1
- " frags. - 34
- Wine bottle frags w/ heavy patina - 3
- Case bottle frags - 3
- Drinking glass, Silesian stem w/ partial foot + bowl - 1
- " " frags. - 4
- Clear glass unknown vessel - 1
- Opaque white, Bristol glass w/ blue rim - 1
- Pane glass - 4
- Pharmaceutical - 1

ST 208 PE (cont)

NAILS

Wrought - 52

METAL

lead shot - 1

BONE

fragments - 12

MISC

Crypto crystalline gray opaque - 1

" " gray trans. - 1

" " boney, opaque - 1

" " wh. tened by heat? - 1

mortar

plaster

oyster shell - 1 cup

Disturbey

50

ST 208 A (Fill to bulldozer cut / Hudson disturbance)

28 June 76

CERAMICS

Buckley coarse earthenware - 1

English clay pipe stems $\frac{5}{64}$ " - 1
 $\frac{6}{64}$ " - 1

GLASS

Wine bottle frag. - 1

NAILS

Wrought - 4

MISC

Shell daub w/ plaster wash? - 2

Disturben

ST 208A

CERAMICS

English clay pipe stem $5/64$ " - 1

" bowl frag. - 1

Disturbed

ST 208 B (Hudson fill)

52

7/6/76

NAILS

Fragment/lump wrought(?) - 1

ST208C (Repair Mold-Addition) Manner house 28 October 77 JEL

Glass

wine bottle neck frag. - 1

Nails

wrought - 9

Misc.

brick



Nails
wrought - 9
Board
Misc.
Glass

ST208D (Repair Hole) repair for addition Manner house 28 October 77 JEL

Ceramics

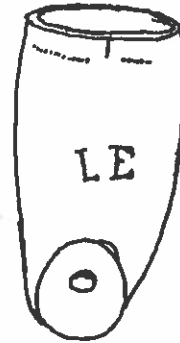
Bellarmino frag. - 1

MJ

Coarse earthenware, orange/bk body w/red ochre - 1

English clay pipe bowl, 'LE' - 1
" frag. - 1

Colono-Indian
~~Aboriginal~~ pottery, rim frag. - 1



Nails

Wrought - 8

Bone

fragments, some burned

Misc.

Charcoal

ST 208 E (Original hole)

29 October 77

JEL

NAILS

Wrought ? - 1 fragment

MISC

bog iron

= same as 205K

56

ST208G (Post Hob) (addition to manner house)

5 November 77 AHG

Ceramics

N. Devon sgraffito - 2

Glass

Wine bottle base, ca. 1700-20 - 1

" " frag. - 2

Drinking vessel, folded foot frag. - 1

Nails

Wrought - 5

Bone

fragments

Misc.

Brick, .21' wide - 1 frag.

Charcoal

Shell - 2 small frags.

Quartz - 2

V

ST 209 PZ

22 June 1976

CERAMICS

- Rhenish blue/gray stoneware - 3 (one a handle) ²/₁
- " w/ manganese purple - 1
- White salt glaze stoneware - 5
- Mottled brown stoneware - 2
- " thin w/ white interiors - 6
- Burslem brown stoneware base - 1
- Nottingham brown stoneware - 1
- Delftware, blue+white - 1
- " plain white - 3
- Slipware, yellow combed, handle joint - 1
- " yellow dotted - 2
- " dark slip handle - 1
- North Devon gravel temper ware - 1

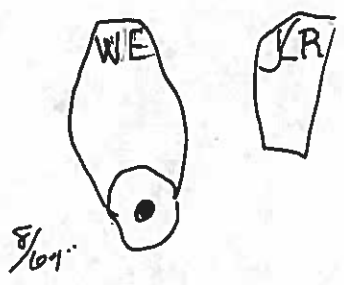
MORGAN JONES Coarse earthenware, orange body w/ red ochre, orange glaze - 1

English clay pipe stems stems w/ bowls

Stem Length	Stems	Stems w/ Bowls	Total
4/64"	2	0	2
5/64"	39	0	39
6/64"	12	2 (1 w/ heel)	14
7/64"	3	3 (1 w/ heel)	6
8/64"	3	1 (w/ makers mark see sketch)	4

- stem frags. - 14
- bowl frags. - 22
- bowl frag w/ makers mark ER - 1
- " " w/ partial illegible marks - 2

local pipe stem 9/64" - 1



GLASS

- Wine bottle base @ 1700 - 1
- Wine bottle frags. - 28
- Drinking glass, folded foot - 1
- " " frag? - 1
- Clear glass handle - 1
- Clear glass, vessel unidentified - 3
- Pharmaceutical - 1 (blue/green)
- Thin amber hollow vessel - 2
- Pane glass - 6

ST 209 PE (cont)

NAILS

Wrought - 29

METAL

IRON, spike - 1

" , unidentified - 1

" , lock plate - 1

BRASS, buckle - 1

" , tack - 1

LEAD, shot - 1

" , chunk - 1

MISC

flint w/ weathered exterior - 2

crypto crystalline brown trans. - 1

quartz - 1

quartzite - 2

plaster w/ shell daub - 1

Oyster shell - 1/2 cup

brick

Disturbed

ST 209 A (Bulldozer fill) AP 28 June 76

CERAMICS

White salt glaze stoneware, slipped - 1
Mottled brown stoneware - 1
" " thin w/ white interior

English clay pipe stems 5/64" - 6
" 6/64" - 2
" 8/64" - 8

GLASS

Wine bottle frag. - 1

NAILS

Wrought - lumps - 3

MISC

crypto crystalline, trans gray, w/ weathered exterior - 1
" opaque gray - 1
daub w/ plaster

Disturbed

ST 209A (Bulldozer fill)

NAIS
Wrought - 1



Disturbed

ST 209 B (Fill to bulldozer cut; cuts post hole) - 29 June '76

CERAMICS

- Rhenish blue/gray stoneware - 1
- Mottled brown stoneware - 1
- Burslem brown stoneware, handle - 1
- " " incised frag. - 1
- Delftware, blue + white - 1
- " " polychrome, blue + red - 1
- " " plain/white - 2
- North Devon sgraffito - 1
- North Devon gravel temper ware - 2
- Coarse earthenware pinkish buff body greenish glaze - 1

- English clay pipe stems stems w/ bowls
 - 5/64" 7 0
 - 6/64" 1 0
 - 7/64" 1 1 (with heel)
 - 8/64" 3 0
- bowl frags. - 5 (1 w) rouletting

GLASS

- Wine bottle frags. - 5
- Case bottle frag. - 1
- Drinking glass frag. - 1

NAILS

- Wrought - 14

METAL

- Brass, pin - 1
- " tack - 1
- " unidentified - 1

BONE

- frags. - 21
- teeth frags. - 2

MISC

- flint w/ weathered exterior - 1
- brick, daub?, oyster shell - 2

62
ST 209C (Post ~~hole~~^{mold}, cut by 209B) 29 June 76

CERAMICS

Mottled brown stoneware - 1
English clay pipe stem $\frac{3}{64}$ " - 1

GLASS

Wine bottle frag. - 1

NAILS

Wrought - 3

ST209C (Post Mold - Repair)

29 September 77 DCM

Ceramics

Delft, white, hollow form body frag. - 1 ✓

N. Devon sgraffito, bowl - 2 ✓

N. Devon gravel temper - 1 ✓

English clay pipe stem frags. - 2 ✓

" bowl " - 2 ✓

Glass

Wine bottle frags - 2 (1 at base of neck) ✓

Nails

wrought - 4

Bone

fragments of small bones, burned, etc. ✓

Misc.

flint - 1 ✓

oyster shell - 1/8 cup ✓

burned clay/brick ✓

ST 209D (Repair hole-manner house)

29 September 77

CERAMICS

Brownstoneware, Bellarmine, neck + handle - 2 (mend)

" " Fragment same vessel - 1

North Devon sgraffito slipware - 1

North Devon gravel temper ware - 3

Colono-Indian ware fragment - 1

English clay pipe stems stems w/bowl

 $\frac{5}{64}$ " 1 \emptyset $\frac{7}{64}$ " 2 \emptyset $\frac{8}{64}$ " 2 \emptyset 2 (1 w/rouletting - beg. of mark) $\frac{9}{64}$ " 1 \emptyset

stem fragments - 34

bowl fragments - 8

heel - 1

Local pipe stem ($\frac{9}{64}$ ") - 1

" " stem fragment - 1

GLASS

Case bottle base fragment - 1

" " fragments - 7+

Wine bottle fragments - 3

NAILS

Wrought - 20

METAL

Lead; shot - 1

BONE

fragments, teeth, fish/fowl bone

MISC

flint/chert - 1

chert - 1

quartz - 2

buff daub w/white plaster

red daub

oyster shell $\frac{1}{2}$ - 2 Cups

10x10
sifted

See additional

65

ST 210 PZ

23-24 June '76

CERAMICS

- Rhenish blue/gray stoneware - 2
- White salt glaze stoneware, dipped rim - 2
- " " handle - 1
- " " slipped frags. - 3
- Mottled brown stoneware - 1
- " thin w/ white interior - 4
- Delftware, blue + white - 3
- " , plain / white - 3
- Slipware, yellow combed - 1
- " , yellow handle - 1
- " , dark slip w/ yellow trail - 1
- North Devon gravel temper ware, rims (pan) - 2
- " frag. - 1
- Buckley coarse earthenware - 1

English clay pipe stems	$\frac{4}{64}$ " - 1	Ø
	$\frac{5}{64}$ " "	1
	$\frac{6}{64}$ " 12	2
	$\frac{7}{64}$ " 1	2
	$\frac{8}{64}$ " 2	Ø
	$\frac{9}{64}$ " 1	Ø
	stem frags. - 3	
	bowl frags. - 16	



- " w/ makers mark (W.E) - 1
- " w/ partial cartouche - 1
- Local pipe stem $\frac{9}{64}$ " - 1

GLASS

- Wine bottle frags. - 23
- Pane glass - 6
- Drinking glass frags. - 2
- Knop - covered dish top - 1
- Modern - 1

MISC

- flint white exterior - 2
- claub w/ plaster -
- Oyster shell 1/2 cup

NAILS

- Wrought - 58

BONE

- fragments - 8

1x 10
sifted

Additional

66

ST 210?E Plow cuts/Wheel cuts 7 July 76

AHS

CERAMICS

Delftware, blue & white - 1 /

Coarseware, orange body w/ red ochre, orange glaze - 1 Pan

English clay pipe stems 5/64" - 1 /

" " 6/64" - 1 /

" bowl frag. - 1 /

MISC

flint/chert gray - 1 /

210A
~~210A~~

post mold second repair
(~~post mold~~ 210A)

67

GLASS

Pane frags. - 3 ✓

ST210A (Post mold) and Repair manner house 28 September 77 RWK

Ceramics

aboriginal pottery, body frag. - 1

Nails

wrought - 2

ST210B (Post hole) Second repair

3 October 78 RWK

CERAMICS

- Mottled brown Bellarmine neck fragment - 1
- Delftware, plain white plate rim - 1
- " " , drug jar rim and frag. - 2
- " " , cup/mug, rims and frags - 4
- " " , fragments - 2
- Majolica, fragments - 2
- Slipware, cup finely combed - 1
- Colono-Indian - 36 same vessel (?)

- English clay pipe stems $5/64"$ - 1
- $6/64"$ - 2
- $7/64"$ - 2
- $8/64"$ - 1
- stem frags. - 3
- bowl frags. - 11
- Local pipe stem ($8/64"$) - 1

NAILS

Wrought - 49 + many fragments

METAL

- IRON, unidentified - 1
- LEAD, shot - 1
- " , unidentified - 3

BONE

mammals, teeth, fish bone, fish scale

MISC

- flint - 4
- quartz - 1
- shark tooth - 1
- brick?/burnt soil/daub
- oyster shell - $3/4$ Cup

ST210 C (Post Mold) manner house repair

23 September 77 Rwk

Ceramics

Delft, blue & white interior, white exterior - bowl, scalloped rim frag - 1

combed slipware (hollow form) - body frag - 1

Colon-Indian
aboriginal pottery - body frag - 1

N. Devon sgraffito - body frag. - 1

English clay pipe stems - $\frac{5}{16}$ - 4 $\frac{1}{16}$ - 3

" " frag - 1

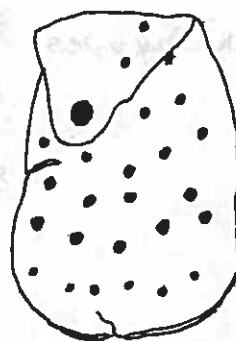
" bowl " - 3

Glass

wine glass bottle, body frag. - 1

drinking vessel, rim frag. - 1

window pane frags. - 2

Nails

wrought - 11

Metal

copper alloy tack - 1

" " ring - 1 curtain ring

~~" " perforated strip - colander?~~

pins - 12

iron wire - 1

LEAD, object w/ holesBone

fish bones, scales, burned frags., etc.

Misc.

flint - 7

whitewashed oyster shell plaster/mortar - 1 frag.

brick - $1\frac{1}{2}$ cups

oyster shell, some burned - several small frags.

STZIOD (post hole) 1st repair

27 September 78 RWI

CERAMICS

Delftware, cup/mug rim - 1 plain/white ✓
 " " , fragments - 3 ✓
 " , plain/white - 1 ✓
 " , blue & white - 1 ✓

North Devon sgraffito, slipware - 1 ✓

Coarse earthenware, buff body, green glaze - 1 ✓

Colono - Indian ware rim - 1 ✓

" " , frags - 13 ✓

English clay pipes $\frac{5}{64}$ " - 3 ✓ Cone with tonged design

$\frac{6}{64}$ " - 0 ✓

$\frac{7}{64}$ " - 1 ✓

$\frac{8}{64}$ " - 1 ✓

stem fragments - 1 ✓

bowl fragments - 6 ✓

GLASS

Wine bottle fragments - 2 ✓

NAILS

Wrought - 25 + fragments ✓

METAL

IRON, buckle - 1 ✓

" , unidentified nail - 1 ✓

BONE

mammals, teeth, fish bone, fish scales ✓

MISC

bog iron, burnt - 1 ✓

oyster shell $\frac{1}{2}$ Cup ✓

JORGAN JONES

ST210G (Post mold) East door thru-passage

23 September 77 RWK

Nails

wrought- 2 ✓

Bone

tooth, 2 fragments ✓

ST210H (Ditch) (through passage trench)

26 September 77 = RWK

Metal

lead shot - 1 ✓

Nails

wrought - 3 ✓

Bone

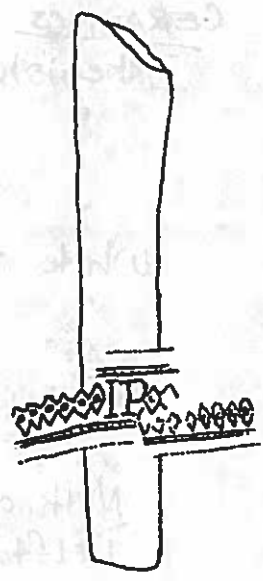
tooth, fragment ✓

ST210J (Post mold) West door post through passage 27 September 77 RWK

Ceramics

~~Proston~~ ~~stoneware~~, jar
body frag. - 1
~~Colono-Indian~~
~~pottery~~, body frags - 2

English clay pipe stems, 1 marked - $\frac{7}{64}$ - 2 ✓
(one w/ IP) ✓



Glass

wine bottle frag. - 1

Nails

wrought - 3

ST 211 PZ

24 June 76

CERAMICS

- Rhenish blue/gray stoneware - 6 (one a handle joint)
- " gray incised - 1
- " beige incised - 1
- " gray molded - 1
- White salt glaze stoneware, dipped rim - 2
- " " dipped base - 1
- " " frags. - 10
- Mottled brown stoneware - 4
- " thin w/ white interior - 5 (2 rims)
- Nottingham brown - 2
- Delftware, blue & white - 5
- " white/plain - 3
- " unglazed - 3
- Slipware, yellow - 3
- " yellow trailed? - 4 (one a base)
- " dark slip - 5
- " yellow handle - burnt? - 1
- North Devon sgraffito - 4
- Buckley coarse earthenware - 7 (1 a rim)
- MORGAN JONES Coarse earthenware, orange body, green glaze (1 a rim) - 2 (cup?)
- North Devon gravel temper ware - 7

English clay pipe stems stem w/ bowl

5/64"	50 (w/ twist)	3
6/64"	25	4
7/64"	2 (rouletting at tip)	0
8/64"	8 (incised)	0
	stem frags. - 17	
	bowl frags. - 47	

Local pipe stem - 9/64 - 1

GLASS

- Wine bottle frags. - 50
- " " near base - 1
- " " rim - 2
- ? Case bottle base - 1
- " " frags. - 20
- Pharmaceutical - 1
- Pane glass - 26
- Drinking glass, folded foot - 3
- " " knob frag. - 1
- " " frags. - 8

ST 211 PZ

NAILS

Wrought - 102



METAL

IRON - unidentified - 4

BRASS - candle stick? see sketch

BONE

fragments - 20

teeth - 4

MISC

flint - gray - 10

crypto crystalline - 3

" " whitened by heat - 1

pet wood - 1

sharks tooth - 1

clay plaster - 1

oyster shell - 1 cup

ST 211A (Old 7E)

14 July 76

CERAMICS

- Rhenish blue/gray stoneware - 7
 " medallion frag. - 1
 White salt glaze stoneware, dipped rim - 2
 " frags - 2
 " frag, not slipped - 1
 Mottled brown stoneware - 6 3
 " thin w/ white interior - 3 4
 Nottingham brown stoneware - 8 7 Burslem brown - 1
 Delftware, blue & white - 4
 " poly chrome, blue + green - 1
 " " red. - 1
 " plain white - 6
 " unglazed - 2
 Slipware, yellow combed - 2
 " yellow trailed - 1
 " yellow - 2
 " dark slip - 4 (1 w/ yellow trail)
- North Devon gravel temper ware - 5
 Buckley coarse earthenware - 3 (one a rim)
- MORGAN JONES Coarse earthenware, orange body w/ red ochre, gr. glaze - 4

English clay pipe stems stems w/ bowls

5/64"	20	-
6/64"	11	-
7/64"	6	-
8/64"	3	-
	stem frags. -	12
	bowl frags. -	4
	heel frag. -	1

Local pipe stem / bowl - 1
 stem frags. - 2

GLASS

- Wine bottle frags. - 49 rim - 1
 Case bottle frags. - 23
 Pharmaceutical, rim - 1 ; frag. - 1 (blue green)
 Tare - 5
 Drinking glass frags. - 11

ST 211A (cont)

NAILS

Wrought - 66

METAL

IRON, unidentified - 2

BONE

fragments - 2

MISC

oyster shell - 1

brick - 2 glazed

shot cold frag - 1

flint/chert - 5

quartz - 3

quartzite - 1

x mends, ²⁰⁸205, 207 PB

ST 211B (Tree hole fill)

4 August 76

CERAMICS

MORGAN JONES Coarse earthenware, orange/buff body w/ red ochre, jugrim-e

English clay pipe stem frags - 3 ✓

ST 211 Y (Palisade stain)

29 October 77 (FN,PT) 2 November 77 (PT,DC)

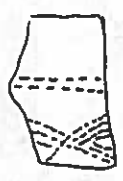
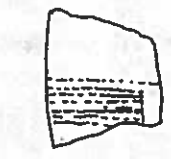
CERAMICS

Indian pottery? - 1

Delftware, blue + white mug (near base) - 1

ORGAN JONES

Coarse earthenware, orange body w/ red oxide, jug frag. - 1 orange glaze



English clay pipe stems	stem w/ bowl			
7/64"	2	∅		= 2
8/64"	∅	∅		= 0
9/64"	∅	1		= 1

Local pipe bowl fragments - 2

NAILS

Wrought - 1

METAL

IRON, buckles - 2

LEAD, shot - 1

BONE

fragments (some burnt)

MISC

quartz - 4

brick/burnt clay bit - 1

10x10
Sifted

See additional

ST 212 P2

25 June 76

CERAMICS

- Rhenish blue/gray stoneware - 7
- " w/ manganese purple - 3
- White salt glaze, slipped - 8
- Mottled brown stoneware - 3
- " thin w/ white interior - 4 (one a rim)
- Burslem brown stoneware - 1
- White ware - 2
- Delftware, blue w purple - Lisbon? - 1
- " blue + white - 2
- " plain/white - 3 (1 w red body)
- " unglazed - 2
- Slipware, yellow - 2
- " yellow combed - 2
- " " trailed - 2
- " dark slip - 3
- " base - 1
- North Devon gray sgraffito - 3
- North Devon gravel temper ware - 2
- Buckley coarse earthenware - 4 (1 a rim)
- Coarse earthenware, orange body w/ red ochre one w/ gr. glaze - 2

MORGAN JONES

English clay pipe stems	stems w/ bowls
5/64 - 50	2
6/64 - 30	3
7/64 - 8	0
8/64 - 8	0

stem frags. 5
bowl frags. - 10

local pipe stem 8/64, 7/64 - 2

GLASS

- Wine bottle frags. - 48
- Case bottle base - 1
- Drinking glass, folded foot - 1
- frags - 8
- Clear kandle - 1
- Pane frags - 4
- Modern - 2

Additional

84

ST212 PZ (Wheel rut N of and easting 3,4 October 77
post hole)

CERAMICS

Mottled brown stoneware, Staffordshire, thin w/ white interior - 1

Nottingham brown stoneware, handle - 1

North Devon gravel temper ware - 1

NAILS

Wrought - 2

MISS

brick chunk

Disturbed

see additional

35

ST 212 A (Bull dozer disturbance)

6/28/76

CERAMICS

English clay pipe stems 5/64" - 2
6/64" - 1
White salt glaze, rim - 1

GLASS

Case ~~was~~ bottle frag. - 1

BONE

fragment - 1

MISC

flint/chert core(?) - 1

Disturbance

Additional

86

ST 212A (Bull dozer disturbance)

28 September 76

R1

CERAMICS

Rhenish blue/gray stoneware - 1

English clay pipe stems stems w/ bowls

5/4"	2	1
6/4"	2	0
7/4"	0	0
8/4"	1	0

bowl frags. - 2

GLASS

Wine bottle frags. - 2

NAILS

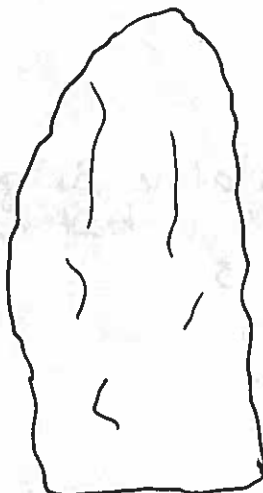
Wrought - 1

BONE

fragments - 3

MISS

crypto crystalline opaque gray - 1
mortar w/ plaster - 1 chunk
daub - 3 chunks
quartzite point - 1



ST 212 B (old 92)

30 June 1976

CERAMICS

- Rhenish blue/gray - 1
- White salt glaze, slipped - 2
- Mottled brown, thin w/ white interior - 1
- Nottingham brown, incised - 1
- Delftware, blue & white - 1
- , plain/white - 1
- , unglazed - 1

English clay pipe stems		stems w/ bowls
5/64	23	1
6/64	8	0
7/64	2	1
8/64	4	0
	stem frags. - 5	
	bowl frags. - 10	

GLASS

- Wine bottle frags. - 7
- Drinking glass, folded foot - 1
- " " frag. - 1
- Pane - 3 (1 melted?)

NAILS

Wrought - 58

MISC

- crypto crystalline dk gray w/ weathered exterior - 1
- q " " heat altered? - 1
- quartzite - 3

Additional

88

ST 212 B (Old PE)

28 September 76 RT

CERAMICS

Rhenish blue/gray stoneware - 1

Delftware, plain/white - 1

English clay pipe stems, $5/64''$ - 2

NAILS

Wrought - 1

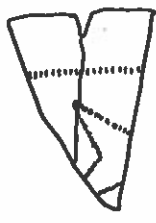
P.H
Disturbed

ST 212 C (tree hole)

2 November 76 RT

CERAMICS

Slipware, dark slip - 1



English clay pipe stems		stems w/ bowls
5/64"	2	2
6/64"	0	0
7/64"	1	0

Local pipe bowl frags. - 2 (mend) see sketch

GLASS

Wine bottle frag. - 1

Pane frag. - 1

NAILS

Wrought, - 3

MISC

brick chunk - 1

ST212E (trench for removal of tree or tree root)

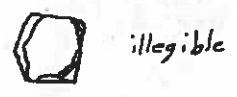
3 October 77

DCM

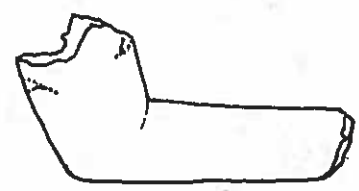
Ceramics

slipped white salt glaze stoneware (hollow form) - body sherd - 1
del ft, blue + white interior, white exterior - body frag - 1

English clay pipe stem - 5/64 - 1
" bowl frag w/mark 1/64 - 1



local clay pipe stem w/part of bowl - 1



Glass

wine bottle glass, body frag. - 1
drinking vessel, frag. from area between stem + bowl - 1

Nails

wrought - 6

Bone

tooth, fragments

Misc.

flint - 1
oyster shell - 1/2 cup

ST212 F (Post mold) SW phase III gable end
shed porch)

2 September 77 DCM

Ceramics

delft, Lambeth - body frag - 1

" , white, saucer - body frag. near rim - 1

STAIR G (post hole) shed porch

29 September 77

DCM

CERAMICS

Rhenish blue/gray stoneware, jug fragment - 1

Staffordshire brown stoneware, tankard/cup rim - 1

English clay pipe stem $5/64$ " - 1GLASS

Wine bottle neck fragment - 1

" " fragment - 1

NAILS

Wrought - 2

BONE

fragments

MISC

brick / black glazed fragment - 1

brick / burnt clay - 2

ST 212 H (no 1d) w addition manner house

6 October 79

PT, F.

CERAMICS

Staffordshire, brown stoneware w/ white interior - 3

Delftware, blue + white - 1

Slipware, combed (cup) - 1

North Devon sgraffito slipware - 1

MORGAN JONES

Coarse earthenware, orangebuff body w/ red ochre, no glaze - 1

English clay pipe stems stems w/ bowl

 $\frac{5}{16}$ "

3

1

 $\frac{9}{16}$ "

1

1

(w/ heel)

stem fragment - 1

bowl fragments - 3

Local pipe stem fragment - 1

NAILS

Wrought - 6

BONE

fragments, teeth

MISC

Brick, some black glazed

Oyster shell - 1 shell

ST 2125 (hole: W addition manner house
cuts ~~at~~ palisade)

7 October 77

PT

CERAMICS

Rhenish blue/gray stoneware - 1

Delftware, blue+white plate rim + mend 2 (Xmend to 237A + 231A + 231D)

" , blue+white, fragment - 1

ORGAN JONES

Coarse earthenware, pink/buff body w/ red ochre, storage jar: over fired - 3

GLASS

Case/Wine bottle, small frag. - 1

NAILS

Wrought - 7

METAL

Lead, shot - 1

BONE

fragments

MISC

burnt clay/brick

oyster shell - 1 shell

K (tree hole)
ST 12 (Black Pit/Burned Subsoil)

95

3 October 77

DCM

CERAMICS

English clay pipe stem/bowl 8/64" - 1 ✓
" bowl fragments - 2 ✓

NAILS

Wrought - 4 ✓

BONE

1 fragment ✓

MISC

Flint - 1 ✓

rounded stone (tool?) - 1 ✓

burnt oyster shell fragment ✓

burnt clay ✓

ST 212 Y (Palisade stain)

4 October 77; 14 November 77

CERAMICS

Delftware, blue + white - 1

North Devon gravel temper - 1

BREGAN JONES

Coarse earthenware, orange body w/ red ochre - 1

English clay pipe stems

6/64" 1

7/64" 1

8/64" 3

bowl fragment - 1

NAILS

Wrought - 7

BONE

fragments

MISC

brick bits (?) burnt clay

rounded rock - 1

NOT SIFTED

97

ST 213 PZ (7'x10')

24-25 June 76

CERAMICS

Rhenish blue/gray stoneware - 2
 " w/ manganese purple - 1
 White salt glaze stoneware, slipped - 5
 Mottled brown stoneware - 3
 " thin w/ white interior - 1

Delftware, blue & white - 2
 " plain/white - 1
 Slipware, yellow trailed - 1
 " dark slip - 2
 Buckley - 4

English clay pipe stems		stem w/ bowls
5/64"	9	2
6/64"	7	1
8/64"	1	0
		bowl frags - 9
		stem frags - 3

GLASS

Wine bottle frags - 22
 Drinking glass frag - 1
 Clear, unident. vessel - 1
 Pane - 2
 Pharmaceutical(?) - 1

NAILS

Wrought - 37

METAL

IRON - ring - 1 of dubious antiquity

BONE

fragments - 3 burnt - 1

MISC

crypto crystalline opaque - 1
 daub? (mortar) w/ oyster shell 1/4 cup
 plaster - 1

CERAMICS

- Rhenish blue/gray stoneware - 2
- Nottingham brown stoneware, handle - 1
- White salt glaze stoneware - 1
- Delftware, blue + white - 3
- Slipware, yellow combed rim (cup) - 1
- " , dk slip handle - 1
- North Devon gravel temper - 1

English clay pipe stems		stems w/ bowls
5/64"	3	1
6/64"	Ø	Ø
7/64"	1	Ø
8/64"	2	Ø
	stem frag - 1	
	bowl frag - 1	

GLASS

- Wine bottle frag. - 1
- Pane frag - 1
- Wine glass rim - 1

NAILS

- Wrought - 9
- Wire - 1

METAL

- Brass, frag. - 1

MISC

- flint - 2
- sharks tooth
- claub (shell)



ST 213 B (Repair mold) manner house

12 October 77

RWK

CERAMICS

Rhenish, manganese reeded neck frag. - 1

Delftware, blue & white (see sketch) - 1

North Devon gravel temper ware - 1

Coarse earthenware bit, N. Devon sgraffito? - 1

English clay pipe bowl fragments - 2

GLASS

Pane fragments - 1

Clear/drinking glass frags. - 3

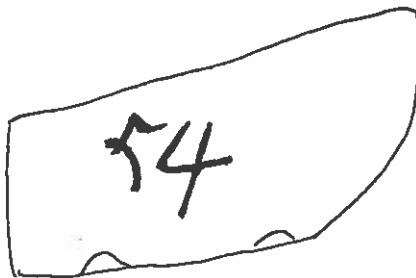
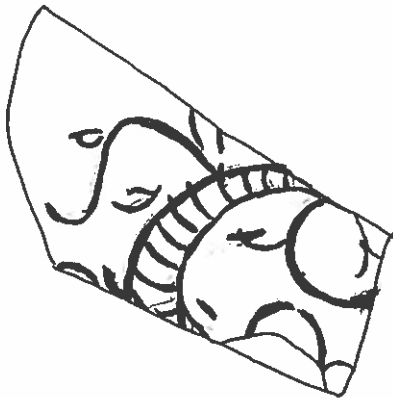
NAILS

Wrought - 5

MISC

Brick / burnt clay

Charcoal



reverse

ST 213C (Repair hole) manner house

12 October 77 RWK

CERAMICS

- Bellarmine bottle frag. - 1
 Rhensish blue/gray stoneware, base - 1
 North Devon gravel temper ware - 3
 Colono-Indian ware, rim - 1
 " " " , body frag. burnt - 1

→ (Phase IV)

- English clay pipe stems 7/64" ϕ
 stem fragment - 1

GLASS

- Wine bottle rim+neck frag. - 4th quarter 17th c.
 Case bottle frag (?) - 1
~~Pane glass~~
 ? Pharmaceutical, goccu - 1
 Wine bottle frag. - 1

NAILS

- Wrought - 12 + many fragments very rusted

MISC

- Quartz
 Burnt clay / daub / brick

ST 213E (Repair mold) manner house

19 October 77 R

CERAMICS

North Devon gravel temper - 1 ✓

Colono-Indian ware, body frag. - 1 ✓

NAILS

Wrought - 5 ✓

MISC

Brick chunk bits - 1? ✓

ST 213 F (Repair hole) manner house

18 October 77

RWK

CERAMICS

"Delft" Majolica (Portuguese) - 3

North Devon gravel temper ware - 2

English clay pipe stem fragment - 1

" " " bowl fragment - 1

GLASS

Case bottle / window pane fragment - 1

NAILS

Wrought - 6

METAL

lead, bale seal

MISC

Quartz

Brick bit (burnt clay?)

Bog iron (burnt)

ST 213 G (Post mold) Manner house 18 October 77 RWK

GLASS

Pharmaceutical, light green - 1

NAILS

Wrought - 3

METAL

IRON, hinge fragments - 2

" , unidentified fragment - 1

ST 213 H (Original hole) Manner house

12 October 77 Rh

CERAMICS

MORGAN JONES Coarse earthenware, orange body w/ red ochre, no glaze - 1

GLASS~~Window pane?~~
Case bottle fragment - 1NAILS

Wrought - 4

ST 213J (Post mold) Manner house

21 October 97 JER

CERAMICS

Coarse earthenware, orange smooth body, small frag w/ no glaze
poss. North Devon sgraffito or Wanfried - 1

NAILS

Wrought - 3

MISC

Charcoal

ST 213 K (Post hole) Manner house

106
21 October 77 JE

NAIIS

Wrought - 1

Not screened

107

ST 214PE (17'x10')

25 June ; 22-23 July 76

CERAMICS

- White salt glaze stoneware, handle - 1
- " " " " , dipped frag. - 1
- Nottingham brown stoneware - 1
- Delftware, plain white - 2
- Buckley coarse earthenware - 1

English clay pipe stems

- 5/64" - 4 (1 stem w/ bowl)
- 6/64" - 3 (2 stems w/ bowl)
- 7/64" - 1
- 8/64" - 1
- stem frag - 1

GLASS

- Wine bottle frags. - 10
- " " rim @ 1st quarter - 1
- Pharmaceutical(?) - 2

NAILS

- Wrought - 24

METAL

- IRON Spikes(?) wrought - 23

MISC

- mortar
- plaster
- oyster shell - 1/2 cup
- crypto crystalline gray opaque - 1 w/core

Screened
3x10

ST 214 PZ

108

1 June 77

KP
PT
RT
SS

CERAMICS

- Mottled brown stoneware - 1
- White salt glaze stoneware - 2
- Staffordshire, thin mottled brown w/ white interior - 1/2 white : 1/2 brown - 1
- Delftware, blue/white - 1
- " , plain/white - 1
- ? Midlands black - 1

- English clay pipe stems 5/64" - 3
- " " 6/64" - 2
- bowl frag. - 1

GLASS

- Wine bottle frag - 7
- Pane glass frags. - 2
- Wine glass frags. - 2

NAILS

- Wrought - 10

BONE

- fragment - 1

MISC

- flint - 4
- mortar, shell daub

ST 214 B (Original hole) manner house 25 October 77 RWK

NAILS

Wrought - 2 ✓

GLASS

Wine bottle ^{case?} fragment - 1 ✓

MISC

Quartzite stone (worked?) ✓

ST 214C (Repair mold) Manner house

25 October 177

RWK

CERAMICS

English clay pipe stem fragments - 2

" " bowl fragment - 1 (w) rouletting at edge)

GLASS

Wine bottle fragments - 1

NAILS

Wrought - 7

BONE

tooth fragment (1); bone fragment (1)

MISC

Black glass bead - 1

burnt clay / brick bits (?)

ST214D (Repair hole) manner house

III
25 October 77 RWT

CERAMICS

- Majolica, fragments - 2
- N. Holland. Wanfried slipware - 2
- Colono - Indian ware, rim - 1
- Coarse earthenware, local - 1 (notched glaze Pot #1)
- English clay pipe stems stem w/ bowl
3/64" 2 1 w/ reshaped end
- stem fragment - 1
- bowl fragment - 1

GLASS

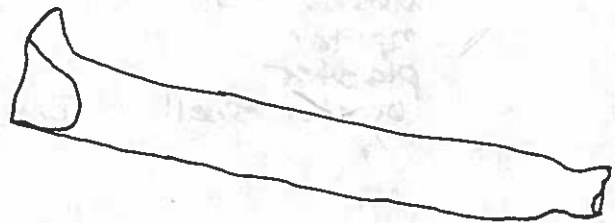
Case bottle fragment - 1

NAILS

Wrought - 31 + fragments

METAL

- IRON, hinge fragments - 2
- " , fragments
- LEAD, shot - 1



BONE

2 small fragments

MISC

- Quartz 1
- Brick/burnt clay 1

3x10

Screened

ST 215 PZ (additional - screened)

113

31 May 77

CERAMICS

White salt glaze stoneware, handle - 1

Nottingham brown stoneware - 1

Delftware, blue white, plate rim - 1

English clay pipe stems $5/64"$ - 6

$6/64"$ - 3

$7/64"$ - 0

$8/64"$ - 1

stem frag. - 1

GLASS

Wine bottle fragments - 4

Pane frags. - 4

Wine ^{glass} bottle frags. - 3

NAILS

Wrought - 14

METAL

Lead, shot - 1

BONE

fragments - 2

MISC

caul ~~caul~~ of plaster ; mortar

Oyster shell - 1 shell

STZISPE

27 September

GLASS

Wine bottle frag. - 1

(base)

MISC

brick bit

ST 215A (Repair post mold: S wall manner (Louse) 21; 27 September 79

CERAMICS

English clay pipe stems stems w/ bowls

5/64" 3 (mouth ends)

1

6/64" 1

Ø

bowl fragments - 2

" " w/partial cartouche - 1

GLASS

Pane fragments - 3

Drinking glass rim - 1

NAILS

Wrought - 3

MISC

Flint - 1

quartzite - 1

Brick

burnt clay / brick / daub

ST 215B (Repair past hole) S wall manner house 21-23 September 77 AMI

CERAMICS

Delftware, plain/white near base mug?/drug jar - 1

Bellarmine frag. - 1

North Devon sgraffito slipware, pan rim - 1

fragments - 3

Coarse earthenware, orange body, manganese bog glaze - 1 (no Mn glaze pot #)

Local pipe bowl frag. - 1

English clay pipe stems

 $\frac{1}{64}$ " 2 $\frac{7}{64}$ " 7 $\frac{8}{64}$ " 2

(one w/ RT stem mark)

stem frags. - 9

bowl frags. - 11

GLASS

Case bottle fragments - 2

Drinking glass fragment - 1

NAILS

Wrought - 35

METAL

IRON, spike

BONE

fragments

MISC

flint - 9

chert - 1

quartz - 1

quartzite - 3

oyster shell - 1 fragment



ST 215D (original post ~~made~~ hole)

20; 27 September 77 AMH

CERAMICS

English clay pipe bowl fragment - 1

NAILS

Wrought - 3

BONE

1 tooth

English clay pipe bowl fragment - 1

3

1

1

1

1

1

1

1

1

1

1

1

1

1

1

1

1

1

1

1

1

1

1

1

1

1

1

1

1

1

1

1

1

10x14
sifted

see summary

18

ST 216 PE

30 June 1976

CERAMICS

Rhenish blue/gray stoneware - 5
" base frags - 2

Mottled brown stoneware - 4

Burslem brown stoneware - 1

Nottingham brown stoneware, base - 1

Delftware, blue/white - 7

" , plain/white - 1

Slipware, yellow - 3

" , dark slip - 2

Buckley coarse ware - 6

N. Devon gravel temper - 1

MORGAN JONES

Coarse earthenware orange body, tan/orange glaze - 2

English clay pipe stems stems w/bowls

5/16" 28 7

6/16" 15 1

7/16" 4 0

8/16" 4 0

stem frags - 8

bowl frags. - 8

w/ rouletting - 1

GLASS

Wine bottle rim late 17th - early 18th c. - 1

" " frags +1

Pane glass - 6 - rounded rim

Pharmaceutical? rim - 1

Modern - 3

Drinking glass - 1

NAILS

Wrought - 27

BONE

fragments - 15

teeth - 3

METAL

IRON, spikes - 2

BRASS, buckle

LEAD, shot - 3

MISC

crypto crystalline - 5

heat exposed? - 3

mortar (daub)

plaster

oyster shell - 1/2 cup

Additional

119

ST 216 PZ

31 August 77

FDN

CERAMICS

Slipware, yellow - 1

North Devon sgraffito slipware - 1

GLASS

Wine bottle base frag. - 1

ST 216A (Post mold) isolated

21, 26 September 77 MG

CERAMICSEnglish clay pipe stem $\frac{5}{16}$ " - 1

Stem fragments - 2

Bowl fragments - 2

GLASS

Case bottle fragments - 3

NAILS

Wrought - 2

METAL

Brass, leather decoration

Lead, shot

BONE

tooth (horse), fragments

MISC

Oyster shell - 2 shell fragments

Bag, iron (burnt?)

ST 216 B (Past hole) Isolated

21; 26 September 77 MG

CERAMICS

English clay pipe bowl bowl fragment - 1

GLASS

Case bottle fragments - 2

NAILS

Wrought - 2

BONE

fragments

MISC

Oyster shell - 3 fragments

ST 217 PZ

30 June, 1 July 76

CERAMICS

- Rhenish blue/gray stoneware - 4
- White salt glaze, dipped rim - 1
- " " , slipped - 5
- Nottingham brown stoneware - 3
- Burslem brown stoneware - 1
- Delftware, blue + white - 1
- " " , polychrome, blue w/ dk purple - 1
- " " , polychrome blue + red - 1
- " " , plain white - 5
- Slipware, yellow - 1 rim
- " " yellow trailed - 1
- North Devon sgraffito - 3
- Buckley coarse earthenware - 4

English clay	pipe stems	stems w/ bowl
$\frac{5}{64}$ "	35	5
$\frac{6}{64}$ "	14	2
$\frac{7}{64}$ "	8	1
$\frac{8}{64}$ "	2	0
	stem frags. - 5	
	bowl frags - 18	

GLASS

- Wine bottle frags. 56 (most very small)
- Pane glass - 14
- Mod. clear? - 4
- 19th C. bottle neck trim - 1

NAILS

- Wrought - 57
- Wire - 1

BONE

- fragments - 30
- teeth - 2

METAL

- IRON, unident. frags. - 2
- BRASS, buckle frag.
- PEWTER, button - 1
- LEAD, shot - 1

MISC

- crypto crystalline - 8
- " " ? whitened - 1
- mortar (daub)
- plaster
- myster shell (1 cup)

Disturbed

ST 217A (Hudson disturbance)

7 July 76

CERAMICS

English clay pipe stems $\frac{6}{16}$ " - 2
 $\frac{7}{16}$ " - 1

NAIS

Wrought - 2

MISC

Oyster shell - 1

METAL

Brass, pin - 1



ST 218 PZ

6 July 1976

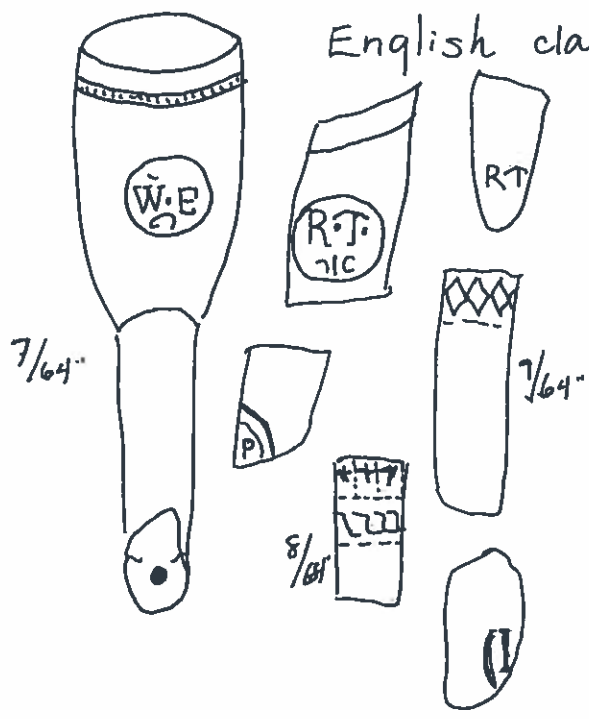
CERAMICS

- Rhenish blue/gray stoneware - 14
- " gray incised - 1
- " w/manganese purple - 1
- White salt glaze stoneware, slipped - 7 (one a dipped rim)
- " not slipped - 2
- Mottled brown stoneware - 14
- " thin w/white interior - 6
- Bellarmino handle/joint - 1
- Burslem brown stoneware - 1
- Nottingham brown stoneware - 4
- Delftware, blue+white - 5
- " , blue/ground - 1
- " , plain/white - 7
- " , unglazed - 2
- Slipware, yellow combed - 11 (3 rims)
- " , yellow combed - 2
- " , yellow trailed? - 3
- " , dark slip - 3
- North Devon sgraffito - 2
- North Devon gravel temper ware - 4 (one a rim)
- Buckley coarse earthenware - 7
- Coarse earthenware, orange body w/red ochre br. glaze - 1

MORGAN JONES

English clay pipe stems

stems w/bowls



English clay pipe stems	stems w/bowls	Notes
5/64"	94	8
6/64"	36	5
7/64"	13	5
8/64"	14 (see sketch)	1 (see sketch)
9/64"	1 (see sketch)	1
	stem frags - 21	
	bowl frags. - 97	
	" w/rouleNing - 4	
	makers mark RT - 1	
	" " RT - 1	
	" " L - 1	
	" " P - 1	
	partial/illegible cartouche - 2	

new record for 102
 1 w/WE \$1
 (EK 12/19/74) 18
 new record for 14
 rouletted stem 2

ST 218 PZ (cont)


GLASS

- Wine bottle frags. - 22
- Pane glass - 21
- Drinking glass, folded foot - 3
- " " " frag - 15
- Pane - 19
- Pharmaceutical - 3
- Modern clear -

NAILS

- Wrought - 63

METAL

- IRON - Spikes - 2
- BRASS - unident.  - 1
- LEAD - frags unident - 2

BONE

- fragments - 8

MISC

- sharks tooth - 1
- Charcoal - 1
- crypto crystalline, dk gray trans, weathered core - 3
- " " " gray opaque - 15
- " " " honey, trans. - 5
- " " " whitened by heat? - 1
- quartz - 2
- clay
- plaster
- oyster shell 1/4 cup

ST 218A (Layer beneath PZ, ~~road wash 2~~)

13 July 96

CERAMICS

- Phenish blue/gray stoneware - 1 ✓
- White salt glaze stoneware, slipped - 3 ✓
- Mottled brown stoneware, base - 1 ✓
- " thin w/ white interior - 1 ✓
- Delftware, blue & white - 1 ✓ ; plain white - 1 ✓
- Slipware, yellow combed - 1 ✓
- " , yellow w/ brown - 1 ✓
- North Devon slipware - 3 ✓
- North Devon gravel temper ware - 1 ✓
- Buckley coarse ware - 1 ✓

- MORGAN JONES { Coarse earthenware, orange body, red ochre, brown glaze - 1 ✓
- " " , buff ^{gray} body, red ochre, tan/orange - 1 ✓
- Olono-Indian Indian " " , orange/gray body w/ red ochre, gravel temper no glaze - 1 ✓

English clay pipe stems stems w/ bowls

5/64"	7	2
6/64"	3	1
7/64"	2	1
8/64"	1	1

stem frags. - 7 ✓

bowl frags. - 5 ✓

GLASS

- Wine bottle frags - 5 ✓
- Pane glass frags. - 3 ✓

NAILS

Wrought - # 19 ✓

METAL

IRON, unidentified frag ✓

BONE

fragments - 4 ✓

MISC

- oyster shell - 1 ✓
- flint/chert gray - 2 ✓
- rock jasper? - 1 ✓

sr 218 B (Wattle fence stain)

3 October 77

JEB

CERAMICS

Delftware, plain/white - 1

North Devon sgraffito slipware - 1

Colono-Indian ware - 1

Rhenish blue/gray stoneware - 1

English clay pipe stems $\frac{6}{64}$ " - 1 $\frac{7}{64}$ " - 1 $\frac{9}{64}$ " - 1

stem fragments - 3

bowl fragments - 3

NAILS

Wrought - 4

METAL

IRON, unidentified - 1

BRASS, tack head - 1

LEAD, shot - 1

BONE

fragments, fish bone

MISC

sharks tooth - 1

clay-burnt? hand molded fragments

oyster shell - 1 shell

ST218C (pit)

26 September 77 P.

CERAMICS

Delft, blue + white, burnt - 1

" , plain/white poss. chamber pot base - 1

North Devon sgraffito slipware - 1 (from floor, I. vessel)

English clay pipe stems

5/64" 1

6/64" 1

7/64" 2

8/64" 4

stem fragments - 9

bowl fragments - 10

GLASS

Drinking glass (stem?) fragment - 1

NAILS

Wrought - 13

METAL

IRON; unidentified

BRASS; pins - 6 (5 heads)

LEAD; shot

BONE

fragments

MISC

flint - 9

brick/daub/burnt clay - 2 chunks

oyster shell - 2 shells fragments

ST 218 D (layer in pit: under c)

27 September 77

PT

CERAMICSEnglish clay pipe stem 6/64" - 1 ✓
" " " bowl fragment - 1 ✓

ST218E (mold) isolated

28 September 77 PT

Ceramics

pipe bowl frag - 1

Bone

toes - 3