

ST 240 D (mold) 8'x10' out building

3 June 79

JEL

CERAMICS

Delftware, plain/white - 1 ✓

GLASS

Wine bottle fragments - 1 ✓

Pane glass fragment - 1 ✓

BONE

fragments - 2 ✓

ST 240 E (hole) 8x10 building

26 May 77 AH

CERAMICS

English clay pipe bowl frag. - 1

GLASS

Wine bottle frags. - 3 +

NAILS

Wrought - 1

BONE

fragments

teeth frags.

MISC

burnt soil/subsoil bits

ST 240 F (trash pit) 12 August '76

CERAMICS

- Nottingham brown stoneware - 1
- Delftware, ointment pot frag. (rim, style @ 1690-1780), white - 1
- porringer / bleeding bowl handle, white - 1
- polychrome; blue/red/green - 1 (bowl # 2)
- blue & white - 3
- unglazed - 6
- + glaze bits
- Slipware, yellow combed - 2
- North Devon sgraffito slipware - 1
- North Devon gravel tempered ware, pan handle - 1
- pan rim - 1
- base frags - 3 (one a storage jar)
- frags. - 1

10RGGAN JONES Coarse earthenware, orange body, orange speckled glaze - 2

- English clay pipe stems
- 5/64" 4 stems/bowls
- 4/64" 1 2
- bowl frags. - 2 1

GLASS

- Wine bottle frags. - 4
- base @ 1700 - 1
- Kick frags @ 1700 - 2
- Drinking glass - Silesian stem - 1
- frag - 1
- Pane glass frags. - 2

NAILS

wrought - 16

METAL

- iron, thin frags. -
- brass, pin - 1

BONE

- fragments - 117
- teeth/jaw frags. - 12
- fragments burnt - 2

MISC

- oyster shell - 1 1/2 cup
- brick bits
- quartz - 1

ST240 G (wash layer into open pit) 13 August 76

CERAMICS

Delftware, blue + white porringer handle frag. - 1

NAIL

Wrought - 1

OK

240 H (?) post mold 8x10

254

~~ST 240A~~

(post hole - repair)

5 June 77

RT

CERAMICS

Delftware, blue glaze bit - 1

English clay pipe bowl frag w/ rouletting - 1

GLASS

Wine bottle frag. - 1

Drinking glass frag. - 1

BONE

fragment - 1

MISC

burnt clay - 1

Bag says hole repair - ER says not

ST 240 J (post hole - 8x10 building) 20 May 77 R.

CERAMICS

Delftware, blue & white - 1

MORGAN JONES Coarse earthenware, orange body w/ red ochre, no glaze - 1

English clay pipe bowl frag. - 1

GLASS

Wine bottle frags. - 2

Wine glass base style @ 1700-1720

NAILS

Wrought - 8

BONE

fragments -

MISC

burnt subsoil/soil - 1 bit

wood bit

Oyster shell - 1 shell

ST 240 L past hole cuts 240 #/5

3 June 79

NAILS

Wrought -1



[Faint, mostly illegible handwritten notes and bleed-through from the reverse side of the page.]

10X10
Airted

ST 241Pz

30 July 76

CERAMICS

- Rhenish blue/gray stoneware - 8
- " w/ manganese purple - 1
- White salt glaze stoneware, dipped rim - 1
- " " handle - 1
- " " slipped handle - 1
- " " base - 1
- " " frags (slipped) - 6
- Mottled brown stoneware - 3
- " thin w/ white interiors - 5
- " " handle base - 1
- Nottingham brown stoneware - 2
- Burslem brown stoneware - 2
- Delftware, white porringer/bleeding bowl - 7 (One mend to 240F)
- Slipware, yellow - 1
- " yellow combed - 4
- " dark slipped - 4

NDS

- North Devon graffiti slipware - 2
- Duckley coarse earthenware - 15

ORGAN JONES

- Coarse earthenware, orange body, brown spat. glaze - 2

English clay pipe stems stems/bowls

formal date
1722-1661

5/64"	50	2	4/64" - 2 (ps)
6/64"	14	1	
7/64"	2	3	
8/64"	3	0	
stem frags.	4		

- stem frags. - 4
- bowl frags. - 16

Local pipe bowl frag. - 1 English shape

GLASS

- Wine bottle frags. - 55
- Pane glass frags. - 10
- Drinking glass, frags. - 21
- " baluster w/ tear - 1
- " stem frag. - 1

Modern clear

NAILS

wrought - 56

METAL

- IRON, spike - 1
- IRON, unknown - 1
- BRASS, harness boss - 1 (3 frags.)

BONE

- frags. - 35
- teeth frag. - 1

ST 241 P2 (cont)

MISC

- flint, gray - 5 ✓
- flint, honey - 5 ✓
- flint, whitened - 9 ✓
- quartz - 1 ✓
- shark tooth frag - 1 ✓
- brick - 1 ✓
- oyster shell - 4 ✓
- black glass bead - 1 ✓



JT 241 A (Old PE)

30 July 76

CERAMICS

Mottled brown stoneware - 3
 " thin w/ white interior - 1
 " thin rim - 1
 Rhenish blue/gray stoneware - 1
 Nottingham brown stoneware - 1
 Burslem brown stoneware - 1
 Delftware, blue/white - 2
 " white - 1
 " polychrome, over glaze red - 1
 " unglazed - 3
 " white, burned - 1
 " + glaze bits
 Slipware, yellow - 3
 " yellow dotted - 1

NDS North Devon sgraffito slipware - 1
 Buckley coarse earthenware - 1

English clay pipe stems	stems/bowls
5/64" #15	2
6/64" #11	1
7/64" - 1	0
stem frags	2, 13
bowl frags	14 (1 w/mark)
Local pipe stem frag.	- 1

GLASS

Wine bottle frags. - 12
 Pane frags. - 4
 Drinking glass frags. - 10
 " stem (Silesian?) - 1

NAILS

wrought - 40

METAL

BRASS - teaspoon handle? - 1

BONE

fragments - 4

MISC

flint, honey - 1
 oyster shell - 3
 brick b.t. - 1

ST 241 B (post mold) fence line

31 August 76 RST

CERAMICS

North Devon gravel temper ware - 1

English clay pipe stem, 6/4" - 1

GLASS

Case bottle frag. - 1

Drinking glass, folded foot - 1

NAIL

Wrought - 4

METAL

Brass, button? - 1

MISC

brick

ST 241C (post hole) fence line

30 August 76 RST

CERAMICSEnglish clay pipe stems $5/64''$ - 1GLASS

Wine bottle frag. - 1

Drinking glass frag. - 1

NAILS

Wrought - 7

BONE

teeth - 1

MISCoyster shell $1/4$ shell

10x10
Sifted

ST 242 PZ

262

30 July 76

CERAMICS

- Rhenish blue/gray stoneware - 11
- " w/ manganese purple - 2
- White salt glaze stoneware, dipped rim - 2
- " slipped handles - 2
- " slipped frags - 14
- " plain - 1
- Mottled brown stoneware - 4
- " thin w/ white interiors - 11
- " handle - 1
- Burstem brown stoneware - 6
- " handle - 1
- Nottingham brown stoneware - 6
- Delftware blue+white - 3
- " plain/white - 2
- " unglazed - 3
- Slipware, yellow - 3
- " yellow w/ pie crust edge - 2 (menaj)
- " yellow dotted - 2
- " yellow combed - 2
- " dark slipped - 6
- " dark slipped handle joint - 1
- North Devon sgraffito slipware - 3
- North Devon gravel temper ware - 4
- Buckley coarse earthenware - 12
- ORGAN JONES? Coarse earthenware, orange body + glaze w/ red ochre - 15

English clay pipe stems stems/bowls

Size	Stems	Bowls	Notes
5/64"	54	7	(1 w/ heel)
6/64"	36	32	3 4
7/64"	2	1	
	stem frags.	6	
	bowl frags.	26	
	bowl frag. w/ makers marks	1	
	Local pipe stem 1 9/64"	1	
	Local pipe stem frag.	1	



GLASS

- Wine bottle frags - 140 139
- Case bottle frags - 6 7
- Pane glass frags - 19
- Drinking glass frags - 21
- " folded foot - 1
- " stem frags - 2 (1 J.lesian)
- Pharmaceutical, blue/green - 2
- (?) Amber(?) - 3
- Modern clear + beer bottle brown

NAILS

Wrought - 50

ST 242 PE (Cont)

BONE

fragments - 16 -
Teeth - 3 -

MISC

brick bits -
oyster shell - 1/2 cup -

10x10
sifted

ST 243 P2

264

30 July 76

CERAMICS

- Rhenish blue/gray stoneware - 15
- " kohr, w/incised lines - 1
- White salt glaze stoneware, dipped - 4
- " slipped - 13
- " slipped foot - 1
- Mottled brown stoneware - 4
- " thin w/ white interiors - 15
- " handle - 1
- " base (Staffordshire?) - 17
- Nottingham brown stoneware - 14
- Burslem brown stoneware - 6
- Delftware, blue + white - 3
- " polychrome red - 1
- " plain white - 9
- " unglazed - 5
- Slipware, yellow, base frags. - 4
- " yellow, handle joint - 1
- " yellow - 2
- " yellow combed - 3
- " yellow trailed - 2
- " dark slip - 7
- " dark slip w/ yellow trail - 2
- North Devon sgraffito slipware - 1
- North Devon gravel tempered ware, pan rim - 1
- " frags. - 6

Staffordshire - 1 thin brown interior

- Buckley coarse earthenware - 14
- MORGAN JONES ~~More~~ Coarse earthenware, orange to buff body, orange/green glaze - 1
- " handle - 1

English clay pipe stems, stems/bowls

5/64"	81	10
6/64"	38	56
7/64"	4	1
8/64"	4	0
9/64"	1	0
stem frags.	-	16
bowl frags.	-	42
"	"	w/roule ting - 2
"	"	w/partial/illegible makers marks - 3

GLASS

- Wine bottle frags. - 190
- " base frag - 1
- " rim frag - 2
- Pane - 16 (one w/ rim)
- Pharmaceutical, blue/green - 15
- Drinking glass, folded foot - 2
- " frags. - 37
- " ? frags heat damaged? - 4
- Modern? clear - 1

ST 243 PZ (cont)

NAILS

Wrought - 47 ✓

METAL

lead - chunk - 1 , brass , thin unknown - 1
lead - disc - 1 ✓

BONE

fragments - 5
teeth - , 4 ✓

MISC

black glass bead - 1 ✓
flint , gray - 7 ✓
flint , honey - 3 ✓
quartz - 1 ✓
stone , unknown - 1 ✓
oyster shell - 10 ✓

CERAMICS

- Rhenish blue/gray stoneware - 21
- " w/ manganese purple - 1
- Mottled brown stoneware - 4
- " " base - 5 (4 mend)
- " thin, w/ white interiors - 12
- White salt glaze stoneware, dipped rims - 2
- " slipped - 10
- Burslem brown stoneware - 1
- Nottingham brown stoneware, handle frags. - 2
- " frags. - 2
- Delftware, blue+white - 2
- " unglazed - 5
- Slipware, yellow - 6
- " yellow dotted - 1
- " dark slip - 2
- North Devon sgraffito slipware - 4
- North Devon gravel temper ware - 2
- Buckley coarse earthenware - 15
- Coarse earthenware, orange body, orange/brown glaze - 5
- Coarse earthenware, thick orange body w/ red ochre

MORGAN JONES

- | | | |
|-------------------------|------------------|----------------------|
| English clay pipe stems | stems/bowls | orange/qr. glaze - 1 |
| 5/64" | 54 | 5 |
| 6/64" | 5 11 | 1 |
| 7/64" | 4 3 | 1 |
| | stem frags. - 13 | |
| | bowl frags. - 27 | |

local pipe stem fragment. - 1

GLASS

- Wine bottle fragments - 148
- " " base frags. - 2
- Case bottle frags. - 3
- Pane fragments - 26
- Pharmaceutical - 1
- Drinking glass, frags. - 17
- " , folded foot - 3
- " stem/foot - 1
- " stem/bowl - 1
- " stem - 2
- " ribbed bowl - 1
- Modern - 3

NAILS

wrought. 33

METAL

- LEAD, unknown - 1
- COPPER/BRASS, unknown, thin - 1

MISC

- flint, gray - 3
- " white - 1
- " honey - 1
- quartzite - 2
- brick bits
- oyster shell - 1/4

10x10
Dusted

JT 245 PZ

257

8/3/76

CERAMICS

- Rhenish, blue/gray stoneware - 7
- " mottled brown rim - 1
- White salt glaze stoneware, dipped rims - 2
- " slipped - 10
- " not slipped - 2
- Mottled brown stoneware - 4
- " thin w/ white interiors - 14
- " handle - 1
- Burslem brown stoneware - 4
- Nottingham brown stoneware - 9
- ? Staffordshire brown stoneware - 2
- Delftware, blue & white - 6
- " white 9
- " polychrome, blue & red ("overglaze" texture) - 1
- " unglazed - 10
- Slipware, yellow - 13
- " yellow handle - 1
- " yellow dotted - 1
- " yellow trailed/combed - 4
- " dark slipped - 8
- North Devon sgraffito slipware - 3
- North Devon gravel temper ware - 3
- Buckley coarse earthenware - 8
- " "butter pot" rim - 1
- MORGAN JONES { Coarse earthenware, buff to orange body, orange glaze - 6
- " rim - 1

Bellarmino

Staffordshire? - 1

+ glaze b.t.s

English clay pipe stems stems/bowls

4/64"	2 (burnt)	0	2
5/64"	9	13 (one w/ keel)	114
6/64"	40	6	46
7/64"	8	2 (one w/ keel)	10
8/64"	3	0	3
	stem frags. - 25		
	bowl frags. - 57		
	" w/ rouletting - 2		

GLASS

- Wine bottle frags. - 132
- " rim - 1
- " base @ 17/15 - 1
- Case bottle frags. - 9
- Pane frags. - 22
- Pharmaceutical, blue/green - 4
- ? Drinking glass? - amber/purple - 1
- Drinking glass, folded foot - 1
- " stem frag. - 2
- " frags. - 43
- Clear "lead glass" handle - 1
- M. Dorn - 3

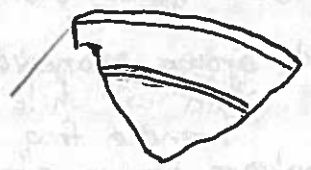
ST 245PZ (cont)

NAILS

wrought - 105

METAL

BRASS, unknown (see sketch)



BONE

fragments - 11

teeth frags. - 9

MISC

point - 1 (see sketch)

flint? whitened - 1

chert? - 3

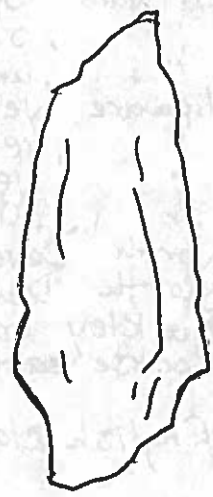
brick bits

oystershell - 1/16 cup

brick - .2 x .29 "

snail shell

quartzite



prob. Bare
151.

10x10
Systed
ST 246 PZ

8/3/76

CERAMICS

- Rhenish, blue/gray stoneware - 11
- White salt glaze stoneware, dipped rim - 1
- " " slipped frags. - 5
- Mottled brown stoneware - 6
- " thin w/ white interiors - 9
- " handle frag. - 1
- Nottingham brown stoneware - 7
- Burslem brown stoneware - 8
- ? Staffordshire, cream/gray exterior w/ light tan interior 1?
- Delftware, blue + white - 4
- " , plain/white - 5
- " , unglazed - 1
- Slipware, yellow - 5
- " , yellow handle - 1
- " , yellow trailed/combed - 6
- " , dark slipped - 11
- North Devon sgraffito slipware - 6
- North Devon gravel temper ware - 4
- Buckley coarse earthenware - 8
- Coarse earthenware, orange/buff body w/ red ochre, orange glaze - 7

English clay pipe stems stems/bowls

4/64"	3	1
5/64"	11	8
6/64"	66	8
7/64"	12	1
8/64"	3	0
9/64"	1	0
stem frags	- 1	23
bowl frags	0	3

1721.24

121

Local pipe stem 9/64" - 1

GLASS

- Wine bottle frags. - 110
- Wine bottle rim, 1st quarter 18th - 1
- Pane frags - 12 (one w/ rim)
- Pharmaceutical blue/green - 8
- Drinking glass, folded foot - 7 (one burnt)
- " frags. - 51
- Clear glass handles - 2
- Burnt? frags - 6
- Modern clear - 9

NAILS

wrought - 138

METAL

BRASS curtain ring
PEWTER? - unknowns (dislike) - 2

ST 246 PZ (cont)

BONE

- fragments - 3
- fragments, burnt - 2
- teeth frags. - 1

MISC

- Point, quartz (see sketch)
- flint, gray - 10
- " heat altered (?) - 4
- honey - 1
- quartz/quartzite - 10
- Chert - 1
- brick bits
- plaster? burnt - 1
- petrified wood - 1
- oyster shell - 1/16 cup
- clear glass bead - 1



WD Lanceolate w/
Weak shoulders.
Poss. Selby/Fox Creek

ST 246 A (Old PE)

8/3/76

CERAMICS

- Rhenish blue/gray stoneware - 3
- Mottled brown stoneware - 2
- " thin w/ white interiors - 1
- White salt glaze stoneware, slipped - 3
- Nottingham brown stoneware - 3
- Delftware, blue & white - 4 unglazed - 1
- " , plain / white - 1
- Slipware, yellow - 1
- " , yellow trailed - 1
- " , yellow cord dotted - 1
- " , dark slip - 2
- North Devon gravel temper ware - 1
- Buckley coarse earthenware - 3 4
- Coarse earthenware, orange body, greenish glaze - 1

MORGAN JONES :

English clay pipe stems	stems/bowls
5/64" 21	2
6/64" 11 (1 burnt)	2
5/64" 1	0
stem frags -	2
bowl frags -	17

1724.007

GLASS

- Wine bottle frags. - 26
- " rim frag. - 1
- Pane frags. - 6
- Pharmaceutical - 2 (blue/green)
- Drinking glass frags. - 15
- Modern yellow - 1

NAILS

wrought - 43

MISC

- Flint/chert - 5
- quartzite - 1
- OYSTER SHELL - 4

ST 246 B (post mold) fence line 27;30 August '76

CERAMICS

White salt glaze stoneware, slipped - 1

Delftware, blue + white - 2

" , polychrome, green - 1

" , plain white - 1

" , no glaze - 1

North Devon sgraffito slipware

English clay pipe stems

$\frac{5}{64}$ " 2 stems w/ bowl

$\frac{6}{64}$ " 6 " " " (w/ heel)

pipe bowl frags. - 6

" " " w/ cartouche (II) (E) - 1 see sketch



GLASS

Wine bottle frag. - 1

Drinking glass frag. - 1

NAILS

Wrought - 9

BONE

fragments - 6

teeth - 1

METAL

IRON, spike - 1

MISC

brick - 5

oyster shell - 1

unidentified? artifact?

ST 246 C (post hole) fence line

CERAMICS

Delftware, blue+white - 1

Slipware, yellow - ~~2~~ (one a base) 2 mend

" , yellow trailed/combed - 1

Coarse earthenware, orange body w/ buff veins, orange glaze, jug rim - 2

English clay pipe stems stems w/ bowls

5/64"

8

1

6/64"

6

1

7/64"

2

Ø

bowl frags. - 5

bowl frag. w/ mark ER - 1 see sketch

" " w/ partial cartouche - 1 " "

GLASS

Drinking glass frags. - 3

NAILS

Wrought - 8

BONE

fragments - 6

MISC

brick chunks

charcoal

oyster shell - 3

10x10
Sifted

ST 247 PZ

774

4 August 76

CERAMICS

Rhenish blue/gray stoneware - 8
" medallion frag. - 1

White salt glaze stoneware - 10

Mottled brown stoneware - 1

" thin w/ white interiors - 12

" handle - 1

Burslem brown stoneware - 8

Nottingham brown stoneware - 6

Delftware, blue + white - 1

" , plain/white - 9

" , unglazed - 1

Slipware, yellow - 3

" yellow combed - 4

" yellow dotted? - 2

" Clark slip - 9

" dark slip handle - 1

North Devon sgraffito slipware - 10

North Devon gravel temper ware - 3

Buckley coarse earthenware - 5

MORGAN JONES?

Coarse earthenware, orange-body w/ yellow (buff) veins + red ochre, orange/br. glaze - 6

English clay pipe stems stems/bowls



2/64" 1 (w/ makers mark - RICH TYLEE see sketch)

5/64" 104 8

6/64" 35 2

7/64" 8 1

8/64" 3 (see sketch one w/ design) 2

stem frags. - 9

bowl frags. - 51

bowl frag. w/ partial illegible cartouch - 1

heel - 1 w/ partial cartouch (A) - 1 (see sketch)

1724.45

GLASS

Wine bottle frags. - 114
rim 1

Pane - 22

Pharmaceutical - 3 (green)

Printing glass frags - 22

folded foot - 7

Pharmaceutical (purple) - 2

NAILS

wrought - 247

BONE

fragments - 19

teeth - 2

MISC.

Wattle Sealer
ST 247B ('hole' trench) fill

12 July 77

276

CLE

CERAMICS

English clay pipe bowl frag. - 1

NAILS

Wrought - 1

MISC

unidentified - flora remains? with the appearance of a
dried raisin



ST 298P2 (cont)

NAILS

wrought - 150

METAL

- BRASS, buckle
- " , leather ornament (see sketch)
- " , shot gun case frag
- " , 1960 Penny
- LEAD, serap
- BRASS, unknown



BONE

- fragments - 11
- teeth frags - 7

MISC

- black glass beads - 3/2
- shark's tooth - 1 frag.
- pet. wood - 1
- flint/chert (gray) - 13
- " " heat whitened? - 1
- " " (honey) - 2
- " " white/gray - 6
- quartzite - 3
- quartzite point frag. - 1
- rose quartz - 1
- oyster shell - 7



ST 248 A (Old Pz)

5 August 76

CERAMICS

- Rhenish blue/gray stoneware - 2
- " medallion frag. - 1
- White salt glaze stoneware - 4
- Mottled brown stoneware, thin w/ white interiors - 2
- Nottingham brown stoneware - 1
- Delftware, blue & white - 4
- " , plain/white - 4
- " , unglazed - 5
- Slipware, yellow - 2
- " , yellow combed - 2
- " , dark slip - 5
- " , yellow base, burnt - 1
- North Devon sgraffito slipware - 1
- North Devon gravel temper ware - 3
- Buckley coarse earthenware - 3
- Coarse earthenware, soft orange body, no glaze (-N. Devon sgraff?) - 1

$\left. \begin{matrix} 2 \\ 7 \\ 9 \end{matrix} \right\} = \begin{matrix} 6 \\ 11 \\ 14 \end{matrix}$

English clay pipe stems stems/bowls

4/64"	1	0
5/64"	53	5
6/64"	27	4
7/64"	3	0



 very faint

- stem frags. - 12
- bowl frags. - 32
- bowl frag w/ keel - 1
- bowl frag w/ makers mark, very faint

1725.9

possible WE - 1

GLASS

- Wine bottle frags. - 40
- Wine bottle base frag. - 1 @ 1700
- " rim frags. - 2 @ 1700
- Pane frags. - 5
- Drinking glass, folded foot - 1
- " frags. - 20 '9
- Modern clear - "NE" - 4

NAILS

Wrought - 65

BONE

- fragments - 3
- teeth frags. - 1

MISC

- ? flint, whitened - 1
- black glass bead - 1/2
- oyster shell - 5
- ? chert - 7
- ... - 1

ST 248B (post mold) fence line 7 August 76

CERAMICS

English clay pipe stems 5/64" - 2
bowl frags. - 2

NAILS

Wrought - 3



ST 248 C (post hole) fence line

27 August '76

CERAMICS

Delftware, blue & white - 1

North Devon gravel temper ware - 1

L English clay pipe stems stems w/ bowls

5/64"	4	2	6
6/64"	3	8	3
7/64"	1	1 (w/ heel)	1
8/64"	1	8	1



stem frags. - 2

bowl frags. - 13

bowl frags w/ mark RC - 1

" " w/ partial cartouche - 1

heel w/ mark - "1L"

see sketch

see sketch

see sketch

GLASS

Pharmaceutical, light green - 1

NAILS

Wrought - 9

BONE

fragments - 10

teeth - 3

jaw w/ teeth - 1

MISC

crypto crystalline? opaque - 1

oyster shell - 1/4 cup

chert

5 August 76

10x10
Dotted

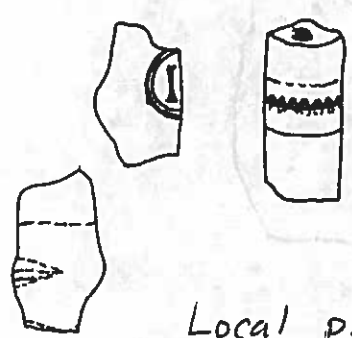
ST 249 PZ

CERAMICS

- Rhenish blue/gray stoneware - 9
- w/ manganese purple - 1
- White salt glaze stoneware, dipped rims - 2
- fragments - 5
- Mottled brown stoneware - 6
- thin w/ white interiors - 9
- Burslem brown stoneware - 2
- Nottingham brown stoneware - 12
- Delftware, blue + white - 3
- plain/white - 6
- unglazed - 4
- Slipware, yellow - 6
- yellow combed - 7
- yellow trailed - 3
- dark slip - 6
- North Devon gravel tempered ware - 3
- Buckley coarse earthenware - 6
- Coarse earthenware, pale orange body w/ red ochre pan rim frags -
- Coarse earthenware: orange exterior, gray interior, sandy temper, no glaze -

MORGAN JONES

English clay pipe stems stems/bowls



5/64"	101	7	1729.46
6/64"	21	1	
7/64"	6	0	
8/64"	2 (one w/ design: see sketch)		

- stem frags. - 13
- bowl frags. - 47
- bowl frags w/ partial illegible cartouche - 1
- bowl frag. w/ partial cartouche - 1 (see sketch)
- Local pipe bowl frag. - 1 (see sketch)

GLASS

- Wine bottle frags. - 75
- base @ 1700 - 1
- rim - 1
- Pane glass - 10
- Pharmaceutical, base frag. - 1
- Drinking glass, folded foot - 3
- frags - 29
- Modern clear - 2
- Clear, handle frags. - 2

NAILS

- Wrought - 61

METAL

- BRASS, buckle frag. - 1
- IRON, unknown frag. - 1

ST 249 PZ (cont)

BONE

- fragments - 10 /
- teeth frag. - 1 /

MISC

- ? flint, gray - 5 /
- ! .. whitened - 2 /
- ? chert - 2 /
- Quartzite - 3 /
- Quartzite worked (see sketch) /
- brick bits /
- shell mortar bits /
- Oyster shell - 1/16 cup /
- pot. wood. - 1 /



UID Litwic
tool. Pass
Scraper.
w/ cortex.
(err)

10x10
Signed

ST 250PZ

5 August 1976

CERAMICS

- Benish blue/gray stoneware - 11
- " medallion frags - 2
- " thick base frag - 1
- " w/ manganese purple - 1
- White salt glaze stoneware, slipped - 4
- " , dipped handle - 1
- " , not slipped - 2
- Mottled brown stoneware - 2
- " handle - 1
- " , thin w/ white interiors - 12
- Brown stoneware, Staffordshire (?) - 2
- Nottingham brown stoneware - 9
- Burstem brown stoneware - 5
- Chinese porcelain - 1
- Delftware, blue & white - 3
- " , white - 9
- " , unglazed - 17
- Slipware, yellow - 11
- 5 " , yellow handle - 1
- " , yellow dotted - 6
- " , yellow trailed - 4
- " , yellow combed - 6
- " , dark slipped - 12
- North Devon gravel tempered ware - 7
- Buckley coarse earthenware, jug rim - 1
- " frags - 5

- MORGAN JONES Coarse earthenware, orange/buff body, orange glaze - 6
- " " , orange body - no glaze - 1
- " " , orange body, dark brown-black glaze - 3

English clay pipe stems		stems/bowls	
2	4/64"	2	Ø
2	5/64"	172	13
26	6/64"	66	10-8
12	7/64"	12	2 (2 w/ heels)
5	8/64"	5	Ø
9		stem frags - 34	
		bow frags - 169	
		bowl frags w/ rouletting - 1	
		bowl frags w/ heel - 2	
		bowl frag w/ spur - 1	
		bowl frags w/ makers marks	
		RT, R., RT, 1 (RT) - 4	
		WE see sketch - 1	



- Local pipe bowl frags - 1
- Local pipe stem frags - 1

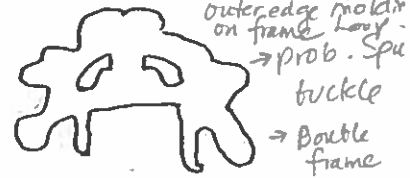
ST 250P2 (cont)

GLASS

- Wine bottle frags. approx 110 (very small)
- Pane glass frags. - 10
- Pharmaceutical - 1
- Drinking glass, folded foot - 3
- " " stem frag. - 1
- " " frags - 38
- "Lead" clear glass; ripple - 1
- Modern clear (?) - 2

see
Whitehead #498/4
→ 17mc. 1620-1690

→ Rectangular buckle
w/ complex openwork
frame of uio pattern.
Prob. Scrolled. Bifid
outer edge mold on frame
→ Prob. Spu buckle



→ 1.24" wide.

NAILS

- wrought - 142

METAL

- LEAD - skot - 1
- LEAD - scrap - 1
- BRASS - ~~furniture decoration~~ - 1 (see sketch)
- Winchester No 12w ville case - 1

buckle frame (etc)

BONE

- fragments - 4
- fragments burnt - 2
- teeth - 7

MISC

- flint - ? gray - 6
- quartzite - 5
- quartz - 1

flint, whitened - 1

ST 250A (Old PZ)

6 August 76

CERAMICS

- Rhenish blue/gray stoneware - 1
- " " medallion frags - GC - 1. R - 1
- White salt glaze stoneware, slipped - 5
- Mottled brown stoneware, thin w/white interiors - 4
- Nottingham brown stoneware - 4
- Burslem brown stoneware - 1
- Delftware blue & white - 4
- " " plain-white - 9
- " " unglazed - 6
- Slipware, yellow - 5 (3 mend) handle joint
- " " yellow combed - 5
- " " dark slipped - 1
- " " dark slipped handle - 1
- North Devon ~~gravel~~ slipware - 8 (7 mend)
- North Devon gravel tempered ware - 5
- " " handle cook pan - 2 (mend)
- Buckley coarse earthenware - 2
- Morgan Jones Coarse earthenware, orange body, buff veins, red ochre, orange glaze - 5

+3 = 7
+9 = 18
+17 = 23
3
3

English clay pipe stems

Stems	Stems/bowls
5/64" 44 45	2
6/64" 28 30	1
7/64" 2	1 (w/heel)
8/64" 3	0

1719, 6



- stem frags. - 8
- bowl frags. - 86
- bowl frags w/rouletting - 2
- bowl frag w/makers mark - ER - 1 (see sketch)

Local pipe stem frag. - 1

GLASS

- Opaque white "Bristol" glass - 2
- Wine bottle frags. - 32
- Drinking glass frags - 11
- "lead glass" handle - 1
- Pharmaceutical - 3
- Pane - 4
- (?) Modern - 1

NAILS

Wrought - 58

METAL

- BRASS - tack
- LEAD - shot - 1
- ; bale seal frag(?) - 1

MISC

- flint-gray - 4
- flint-honey - 2
- flint/chert(?) - 3
- rose quartz - 1
- quartz - 1

BONE

knives - 5

ST 250 B (Post mold) fence line

8/24/76²⁵

E

CERAMICS

white salt glaze stoneware, slipped - 1
 Delftware, blue white - 1 (burnt)
 white - 2

English clay pipe stems

5/64" - 1
 6/64" - 1
 bowl frags. - 2
 stem frags - 1

GLASS

wine bottle base, ~~1/4~~ quarter 17th c. - 100 - 1
 shoulder / neck frag. - 1
 frags. heavy patina - 2

Pane frags. - 1

Drinking glass frags. folded foot - 1

Lead glass, handle (attached) - 1

Bottle glass - ~~base~~? filled in base - 1 linen pressNAILS

wrought - 2

BONE~~fragments - 1~~

teeth - 2

fish bone - 2

MISC

brick

charcoal

oyster shell - 4

~~ST 250 C - NO ARTIFACTS post hole fence line~~

ST 250 B (post mold) fence line 22 August 76

CERAMIC

White salt glaze stoneware, slipped - 1

EGAN JONES Coarseware, orange body w/ red ochre, orange glaze - 2
(1 jar rim)

English clay pipe stems stems w/ bowls

5/64" 2 0

6/64" 0 1

8/64" 1 0

stem frags. - 2

bowl frags. - 5

GLASS

Wine bottle frag. - 1

Drinking glass frags. - 3

NAILS

Wrought - 7

METAL

Brass pins - 2

" , curtain ring - 1

BONE

frags. - 9

teeth - 1

MISC

oyster shell - 1

ST 250 D (fill in pit)

25 August 76

CERAMICSDelftware, base, rim + frags, blue & white: ^{mug} storage jar - 5 (from 15 Va)

" " , blue & white - 2

" " , white - 1

" " , unglazed - 1

" " , glaze bits

Slipware, yellow combed - 4

" " , dark - 1

North Devon sgraffito slipware - 5

North Devon gravel tempered ware - 3

Coarse earthenware: storage jar - 1, pan rim - 2, frags - 3 TOTAL - 14

English clay pipe stems stems/bowls

5/64

1

1

6/64 "

5

1

7/64 "

7

2 (w/ keels)

8/64 "

5

Ø

9/64 "

1

Ø

stem frags. - 2

bowl frags. - ~~2~~ 25

bowl frags w/ rouletting - 3

bowl frag. w/ partial mark W - 1

see sketch

Local pipe bowl frag. - 1 (see sketch ->)

Local pipe stem frag. - 1

GLASS

Wine bottle frags. - 7

Pane glass frags. - 5

Drinking glass frags. - 4

Blue-green, pharmaceutical? - 1

NAILS

wrought - 142

wrought - long - 2

METAL

Brass - tack - 1

Lead - caming - 2

BONE

frags. - 25

frags. burnt - 12

teeth - 7

teeth/jawbone - 1

+ many small burnt frags.

MISC

flint - 3

quartz - 1

quartzite - 3

charcoal - 1

brick - 1

oyster shell - 2

ST 250 E (fill in bottom of possible fire pit)

30 August 76

CERAMICS

English clay pipe bowl frag. - 1
Local pipe bowl - 1 ~~late 17th c~~ @ 1680 English shape

NAILS

Wrought - 12
Wrought w/wood - 1

BONE

fragments - 2
fragments, burnt - 2

METAL

Brass, tags one reworked into a tack - 2

MISC

burnt rock
burnt sod (daub.)
Charcoal



MISC

fragments - 11
charcoal - 4
burnt rock - 1
burnt sod (daub.) - 1
brass tags - 2

fragments - 11
charcoal - 4
burnt rock - 1
burnt sod (daub.) - 1
brass tags - 2

Adjusted 10/01/10

ST 251 PZ

6 August 76

CERAMICS

- Rhenish blue/gray stoneware - 10
- " w/manganese purple - 1
- White salt glaze stoneware - 6
- " dipped rims - 2
- Mottled brown stoneware - 3
- " thin w/ white interiors - 11
- Burslem brown stoneware - 4
- Nottingham brown stoneware - 12
- Delftware, blue + white - 1
- " , plain/white - 4
- " , unglazed - 2
- Slipware, yellow - 4
- " , yellow dotted - 1
- " , dark slip - 2
- North Devon sgraffito slipware - 3
- North Devon gravel temper ware - 4
- Buckley coarse earthenware - 5
- Coarse earthenware, orange body + orange or green glaze - 4
- one w/ buff veins.

MORGAN JONES

English clay pipe stems stems/bowls

4/64"	1	0	2
5/64"	89	4	(2 w/ keels)
6/64"	33	0	
7/64"	5	0	
8/64"	1	0	



- stem frags. - 16
 - bowl frags. - 97
 - bowl frag w/ keel - 2
 - bowl frag partial illegible marks - 2
 - bowl frag w/ makers mark I-B - 1
 - RT - 1
- 1727, 605
- seesktul

GLASS

- Wine bottle frags - 62
- Pane frags. - 9
- Drinking glass frags. - 25
- " folded foot - 1
- Opaque white "Bristol" w/ blue rim - 1

NAILS

Wrought - 33

BONE

- fragments - 11
- teeth - 4

METAL

- BRASS - buckle frag.
- LEAD, shot - 1
- " seal frag - 1

MISC

- opaque cryptocrystalline - 7
- translucent " - 2
- quartz - 2
- oyster shell - 6
- shell mortar
- brick chunks ?

10x10
Sifted

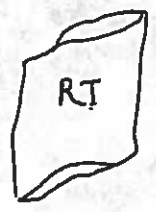
ST 252 PE

10 August 76

CERAMICS

- Rhenish blue/gray stoneware - 11
- White salt glaze stoneware, fragments - 7
- " " handle - 1
- " " dipped rims - 3
- Mottled brown stoneware - 5
- " thin w/ white interiors - 3
- " handle - 1
- Burslem brown stoneware - 5
- Nottingham brown stoneware - 10
- Delftware, blue+white - 3
- " white - 6
- " unglazed - 3
- Slipware, yellow - 3
- " yellow trailed - 2
- " yellow combed - 2
- " dark slip - 9
- North Devon sgraffito slipware - 1 *Washed?*
- North Devon gravel temper ware - 8
- Buckley coarse earthenware - 4
- Coarse earthenware, orange body w/ red ochre - 4
- Coarse earthenware pink/orange or gray body - 1 *no glaze*

ORGAN JONES



- English clay pipe stems, stems/bowls
- 5/64" 117 13/14 (one w/ mark - RT - see sketch)
- 6/64" 43 1 9/16 (2 w/ heel)
- 7/64" 7 12
- 8/64" 5 0
- stem frags - 17
- bowl frags. - 83
- bowl frag w/ rouletting - 1
- " " w/ partial, illegible marks - 6
- " " w/ mark - RT - 1

1724, 35

Local pipe stem/bowl, 9/64" - 1

GLASS

- Wine bottle frags. - 96
- Drinking glass, folded foot - 2 (mend)
- " frags. - 14
- " frags, burnt - 1
- Pharmaceutical - 1
- Pane - 5

BONE

- frags. - 5 (4 burnt)
- teeth frags. - 5

NAILS

Wrought - 60

METAL

BRASS unknown - see sketch

MISC

MISC cont

- translucent crypto cryst - 5
- opaque " " - 11
- rose quartz - 1
- quartz - 1
- rounded rock burnt? - 1



ST 252A (Old 72)

10 August 76

CERAMICS

- Rhenish blue/gray stoneware - 3
- Mottled brown stoneware - 3
- " thin w/ white interiors
- Bellarmino bottle rim frag. - 1
- Burslem brown stoneware - 1
- Nottingham brown stoneware - 4
- Delftware, blue & white - 2
- " plain/white - 5
- Slipware, yellow - 4
- " yellow handle - 1
- " dark slip - 1
- North Devon gravel temper ware - 3

MORGAN JONES

Coarse earthenware, orange body w/ red ochre, dk fabric, orange glaze - 3

English clay pipe stems

Stems	Bowls
5/16"	4
6/16"	18
7/16"	23
8/16"	1

1723.25



- stem frags. - 2
- bowl frags. - 51
- " w/ rouletting - 2
- " w/ partial illegible marks - 2
- " w/ possible very faint - KEEP - 1
- see sketch w/ makers marks - ER - 1
- IB - 1

GLASS

- Wine bottle frags. - 34
- Drinking glass r. folded foot - 1
- " frags. - 11
- Pane frags. - 3

NAILS

Wrought - 20

BONE

- fragments - 3 (one burnt)
- teeth frags - 2

METAL

LEAD, disc (seal part?) - 1

MISC

- black glass bead - 1
- translucent crypto-crystalline - 3
- opaque - 4
- quartz - 2
- dyskerskell - 4

10x10
Sifted

ST 257 PZ

13 August 76

CERAMICS

- Rhenish blue/gray stoneware - 8
- White salt glaze stoneware, dipped rim - 1
- " " slipped - 5
- " " plain (not slip-dip) rim - 1
- Mottled brown stoneware - 6
- " " thin w/ white interior - 13
- Nottingham brown stoneware - 8
- Burstem brown stoneware - 3
- Dolftware, blue, white - 2
- " " white - 7
- " " unglazed - 23
- Slipware, yellow - 12
- " " yellow dotted - 3
- " " yellow trailed - 1
- " " yellow combed - 5
- " " dark slip - 7
- North Devon sgraffito slipware - 9 (2 mend)
- North Devon gravel tempered ware - 1
- Buckley coarse earthenware, rim - 1
- " " frags. - 10

MORGAN JONES Coarse earthenware, orange body & glaze, red ochre - 4
(1 storage jar frag) ?

English clay pipe stems stems/bowls

5/64"	117	10
6/64"	55	4
7/64"	6	0
8/64"	1	0

stem frags. - 22

bowl frags. - 56

bowl frags w/makers marks.

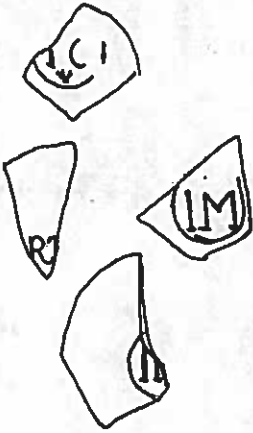
partial/illegible - 2

RT - 1

IM - 1

IC - 1

IM or IA - 1



GLASS

- Wine bottle frags. - 115
- " " base frag - @ 1700 - 1
- " " rim - 2
- Pane frags. - 11
- Drinking glass, folded foot - 6
- " " stem/foot - 1
- " " frags. - 21
- Pharmaceutical - 4

NAILS

Wrought - 115

ST 2577Z (cont)

METAL

LATTEN, spoon w makers mark "RB"
 BRASS, ~~luminaire / small drawer? part~~
 LEAD, nodule - 1



1 harness buckle

BONE

Frag. - 31 ; burnt - 1
 Teeth - 10

MISC

black glass beads - 2 frags.
 flint, gray - 2
 oyster shell - 1/2 cup

ST 257 A (post mold-repair)

12 May 99

RT

MISC

post remains

ST 257 E (~~NE~~^{NW} post hole - 4 post building) 13 May 77 PA

CERAMICS

ORIAN JONES Coarseware, orange body w/ red ochre, orange glaze - 1

English clay pipe stem, $\frac{1}{64}$ " - 1

ST 257 F (NE post mold: 4 post building)

19 May 77

RT

NAILS

Wrought - 6

ST 257 F (post mold)

13 May 77

NAILS

Wrought - 3 ✓

MISC

brick chunk - 1 ✓

oyster shell - 1 fragment ✓

ST 257G (post hole) NE 4 post building 13 May 77

KP

NAILS

Wrought - 1 fragment

344

ST 257 J (SE post hole : ^{Repair} + post building)

12 May 77 PA

GLASS

Cave bottle frag. - 1

10x10
glazed

ST 258 PZ

345

13; 17 August

CERAMICS

- Rhenish blue/gray stoneware - 15
- beige w/ incised lines - 1
- White salt glaze stoneware, slipped - 5
- " plain - 1
- Mottled brown stoneware - 3
- " handle - 1
- " thin w/ white interior - 6
- Nottingham brown stoneware - 7 (mond to 255 base)
- " handle frag - 1
- Burslem brown stoneware - 14
- " handle - 1
- Brown stoneware, Staffordshire? - 1
- Delftware, blue/red plate - 1
- " light purple - 1
- " blue/white - 11
- " white - 20 (plate foot)
- " white, burnt - 2
- " unglazed - 4
- Slipware, yellow - 9
- " yellow handle - 1
- " yellow trailed/dotted - 1
- " yellow trailed - 4
- " yellow dotted - 4
- " yellow combed - 8
- " light brown - 3
- North Devon Sgraffito slipware - 18
- North Devon gravel tempered ware - 8
- Quekley coarse earthenware - 5
- Sgraffito ware, orange/red body, white slip, green glaze - 1
- " possible body frag - 1
- MORGAN JONES Coarse earthenware, buff-orange body, orange-green glaze - 9

English clay pipe stems stems/bowls

4/64	1	0
(one w/ design) 5/64	212	16
6/64	76	11
7/64	4	2
8/64	3	1



- stem frags. - 19
- bowl frags. - 193
- bowl frags w/ rouletting - 5
- bowl/stem illegible cartouche 5/64" - 1
- bowl frag. partial illegible cartouche - 6
- " " makers marks -

- ER - 4
- (ER) - 1
- (E REED) - 3
- RT - 6
- IA - 2

ST 258 P2 (cont)

GLASS

Wine bottle frags - 110
 " fin @ 1700 - 1
 " rim @ 1680-1700 - 1
 Drinking glass, winged stem, collar-twisted glass @ 1685-1695 - 1
 " foot/stem - 1
 " folded foot 3
 " folded foot burnt - 1
 " frags - 42
 "Bristol" opaque white glass - 1
 Pane glass frags. - 18
 Pharmaceutical - 4
 Case bottle frag. - 1

NAILS

wrought - ~~79~~ 161

METAL

IRON - object like those previously called 19th Charrow teeth - 1
 " hinge? - 1
 " UNKNOWN - 8
 " Knife frag. - 1
 LEAD, coming - 2
 bale seal frags. - 2
 BRASS. buckle w/iron tang - 1
 PEWTER - spoon frag - 1

BONE

fragments - 98
 + fragments. Small and unlabeled
 teeth - 41
 fragments, burnt - 12

MISC

bone handle - cutlery - 1
 black glass bead - 1/2
 flint, gray - 3
 flint/chert - 2
 quartz, projectile point base (see sketch)
 charcoal
 trowel handle - wooden - 1
 oyster shell - 1 PINT

ST 258B Wattle fence ditch fill

23 May 77

PA

CERAMICS

MORGAN JONES Coarseware, orange fabric, body w/ red ochre - 1



10x10
dyed

ST 259 PZ

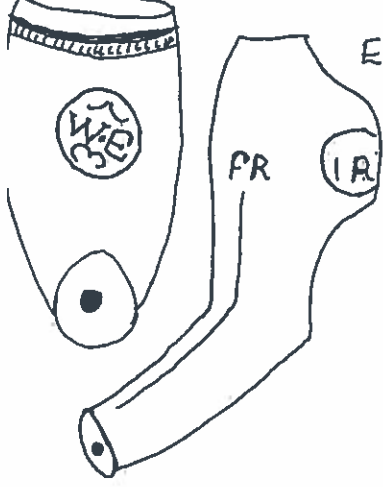
16/13 August 96

CERAMICS

- ✓ Phenish blue/gray stoneware - ~~13~~ 14
- ✓ " w/ manganese purple - 2
- ✓ " beige w/ incised lines - 3
- ✓ White salt glaze stoneware, dipped rim - 2 3
- ✓ " handle - 1
- ✓ " dipped - 6
- ✓ Mottled brown stoneware - 4
- ✓ " jar neck - 1
- ✓ " thin w/ white interiors - 9
- ✓ Nottingham brown stoneware - 7
- ✓ Burstern brown stoneware - 10
- ✓ Brown stoneware, Staffordshire - 6 7
- ✓ Delftware, blue & white, drug jars/pots, rims - 2
- ✓ " plate foot - 1
- ✓ " handle joint - 1
- ✓ " frags - 14
- ✓ " white - 16
- ✓ " white drug jar/pot rims - 2
- ✓ " unglazed - 9
- NO ✓ North Devon sgraffito slipware - 3
- Slipware, yellow - 12
- " yellow combed - 5
- " light brown - 2
- " dark slip - 3 5
- ✓ " dark slip, handle - 1
- NO ✓ North Devon gravel tempered ware - 10
- ✓ Buckley coarse earthenware - 3
- ✓ Coarse earthenware, buff-orange body, orange-gr. glaze - 3

13	16	0
2	16	9
1	2	
1		
15	18	9

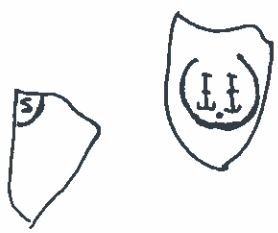
MORGAN JONES



English clay pipe stems



- 5/64 ✓ 1789 21 28 (2w/heel, 1 ER; 1 WE see sketch)
- 6/64 ✓ 5960 ✓ 6
- 7/64 ✓ 6 ✓ 3 (1 WE see sketch)
- 8/64 ✓ 6 ✓ 1
- ✓ Stem frags. - 31
- ✓ bowl frags. - ~~163~~ 163
- bowl frags. - partial, illegible marks - 3 5?
- bowl frags w/ marks
- R; RT; T; R; RT (RT) - 5
- R - IPP - T R. TIPPET - 1
- R, - N, F, ER, FR (ER) - 5
- (ER) - 1
- ER (see sketch) 7 1
- 1/2



Local pipe stems - 1
bowls - 1

ST259PE (cont)

GLASS

- ✓ Wine bottle frags. - 62
- ✓ " " rim @ 1700 - 1
- ✓ Pharmaceutical - 2
- ✓ Pane glass - 17
- ✓ Case bottle frag. - 1 ✓
- ✓ Drinking glass - folded foot - 5 ✓
- ✓ " " stem frags - 2 ✓
- ✓ " " frags. - 27 ✓
- ✓ "Bristol" White opaque - 2 (mend)

NAILS

- ✓ wrought - ~~235~~ 249

METAL

- ✓ PEWTER, spoon frags - 2
- ✓ LEAD, coming - 1
- ✓ LEAD, unknown - 1
- ✓ BRASS, buckle? frag - 1
- ✓ IRON, bolt - 1
- ✓ IRON, unknown - 1 (3)
- ✓ IRON - unknowns, thin - 3

BONE

- ✓ fragments - 151
- ✓ fragment, burnt - 37
- ✓ teeth - 31

MISC

- ✓ turtle scale - large - 1
- ✓ flint - 5 (2 spalls?)
- ✓ quartz - 1
- ✓ shark's tooth - 1
- ✓ brick bits
- ✓ oyster shell - 1 pint

ST 259 A (fill in circular pit)

13 October 76

SS

CERAMICS

Burslem brown stoneware - 1

English clay pipe stems	stems w/ bowls
5/64	1
6/64	1
	bowl frags. - 5

GLASS

Drinking glass frag. - 1

NAILE

Wrought - 5

BONE

fragments - 22
teeth - 5

MISC

oyster shell - 2